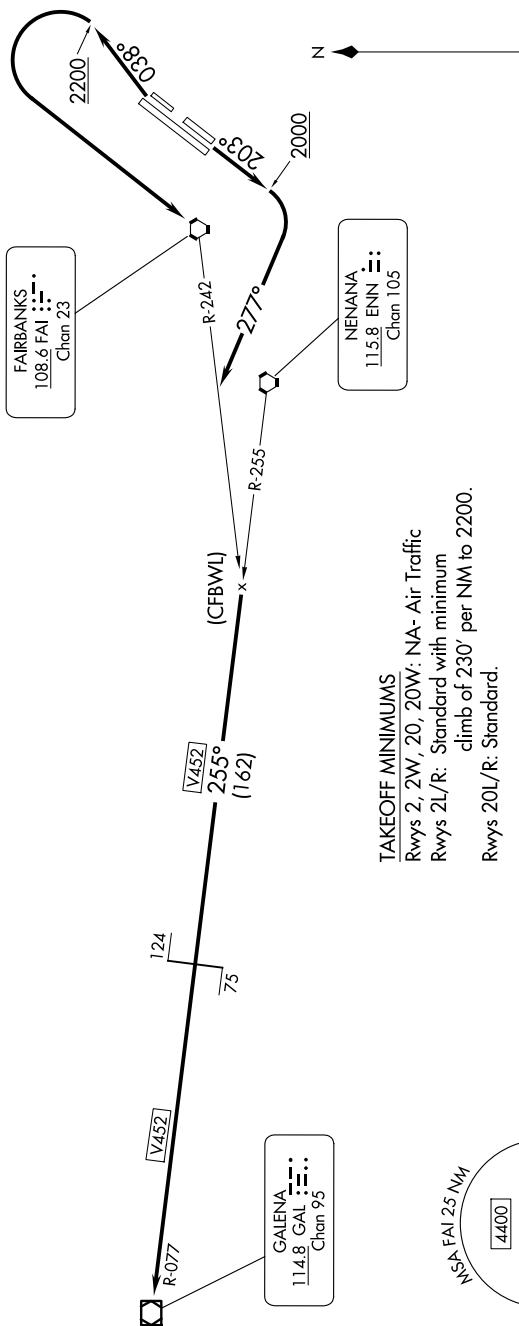


TAKEOFF RUNWAYS 2L/R: Climb on heading 038° to 2200,  
then left turn direct FAI VORTAC, thence ...  
TAKEOFF RUNWAYS 20L/R: Climb on heading 203° to 2000,  
then right turn heading 277°, thence ...

... intercept FAI R-242 to ENN R-255, then on ENN R-255 and GAL R-077 to GAL VOR/DME, then continue climb on assigned route and altitude.



**TAKEOFF MINIMUMS**  
Rwys 2, 2W, 20, 20W: NA- Air Traffic  
Rwys 2L/R: Standard with minimum  
climb of 230' per NM to 2200.  
Rwys 20L/R: Standard.

NOTE: Chart not to scale.