

VOR/DME OME	APP CRS	Rwy Idg
115.0	276°	6009
Chan 97		TDZE 25
		Apt Elev 41

VOR RWY 28

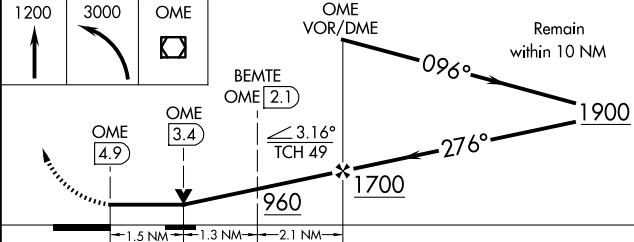
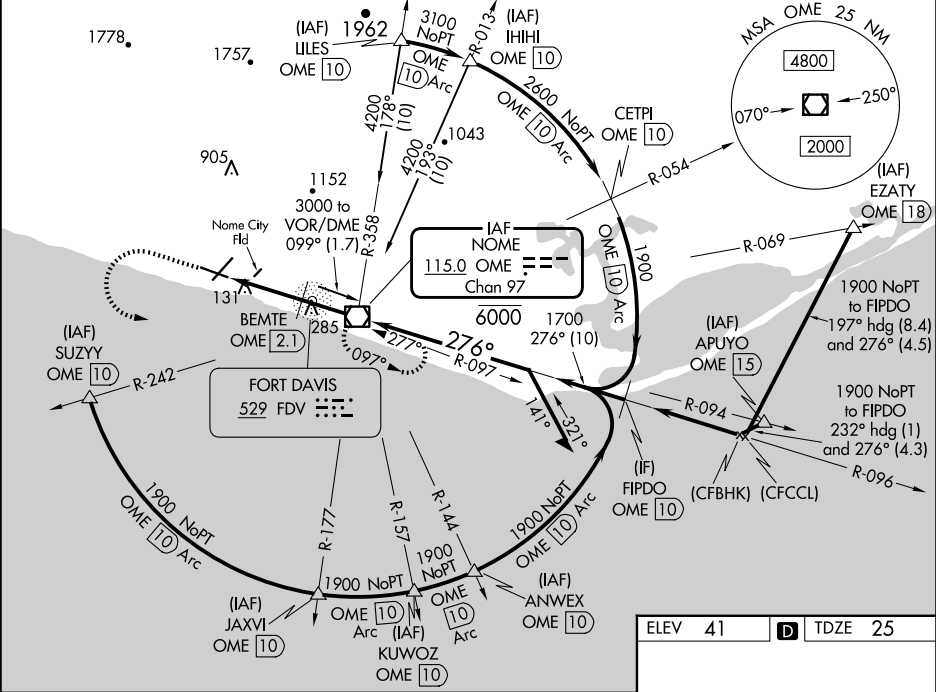
NOME (OME)(PAOM)

For inop ALS, increase S-28 BEMTE fix minimums Cat A/B visibility to RVR 5000, increase Cat C/D visibility to 1 3/4 SM. Circling NA for Cats C and D north of Rwy 10-28. Circling Rwy 21 NA at night. Rwy 28 helicopter visibility reduction below RVR 4000 NA.

MALSR

MISSED APPROACH: Climb to 1200 then climbing left turn to 3000 direct OME VOR/DME and hold, continue climb-in-hold to 3000.

AFIS	ANCHORAGE CENTER	NOME RADIO
119.925	133.3 290.4	123.6 (CTAF) 1



CATEGORY	A	B	C	D
S-28	960/40 935 (1000-3/4)		960-2 935 (1000-2)	
CIRCLING	960-1 1/4 919 (1000-1 1/4)		960-2 3/4 919 (1000-2 3/4)	960-3 919 (1000-3)
BEMTE FIX MINIMUMS				
S-28	540/40 515 (500-3/4)		540/55 515 (500-1)	
CIRCLING	540-1 499 (500-1)		540-1 1/2 499 (500-1 1/2)	700-2 659 (700-2)

ELEV 41 D TDZE 25

REIL Rwy 3 and 10 1
HIRL Rwy 10-28 1
MRL Rwy 3-21 1

FAT to MAP 4.9 NM

Knots	60	90	120	150	180
Min:Sec	4:54	3:16	2:27	1:58	1:38