

24081

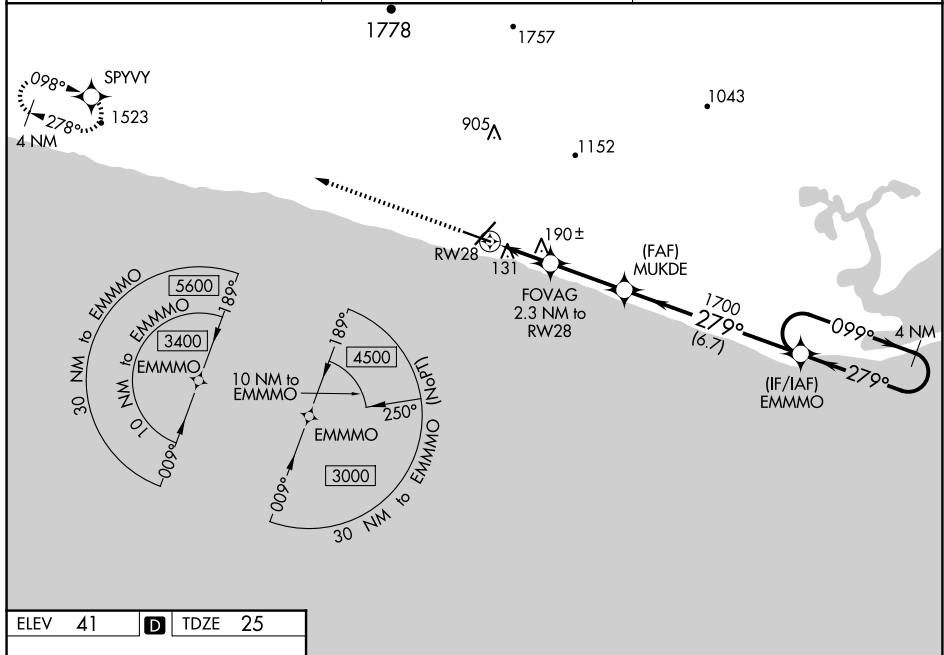
RNAV (GPS) RWY 28  
NOME(OME)(PAOM)

**▼** Inop table does not apply to LPV 28 all Cats. For uncompensated Baro-VNAV systems, LNAV/VNAV NA below -18°C or above 54°C. Circling NA for Cats C and D north of Rwy 10-28. NA. Rwy 28 helicopter visibility reduction below 4000 NA. Circling Rwy 21 NA at night.

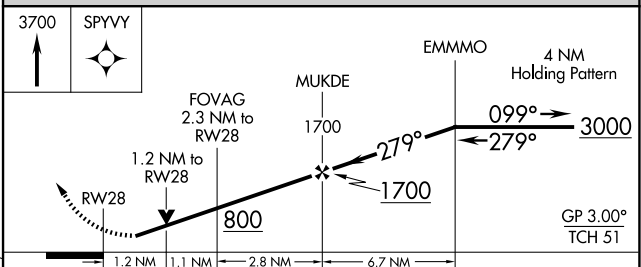
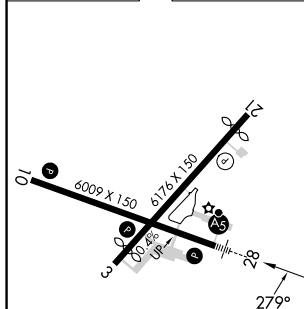


**MISSED APPROACH:** Climb to 3700 direct SPYVY and hold, continue climb-in-hold to 3700.

AFIS <b>119.925</b>	ANCHORAGE CENTER <b>133.3 290.4</b>	NOME RADIO <b>123.6 (CTAF) 0</b>
------------------------	--	-------------------------------------



ELEV 41	<b>D</b>	TDZE 25
---------	----------	---------



CATEGORY		A	B	C	D
LPV	DA	275/40 250 (300-¾)			
LNAV/ VNAV	DA	301/40 276 (300-¾)			
LNAV	MDA	440/40 415 (400-¾)			
<b>C</b> CIRCLING		540-1 499 (500-1)	540-1½ 499 (500-1½)	700-2 659 (700-2)	

NOME(OME)(PAOM)  
RNAV (GPS) RWY 28

AK, 12 JUN 2025 to 07 AUG 2025