

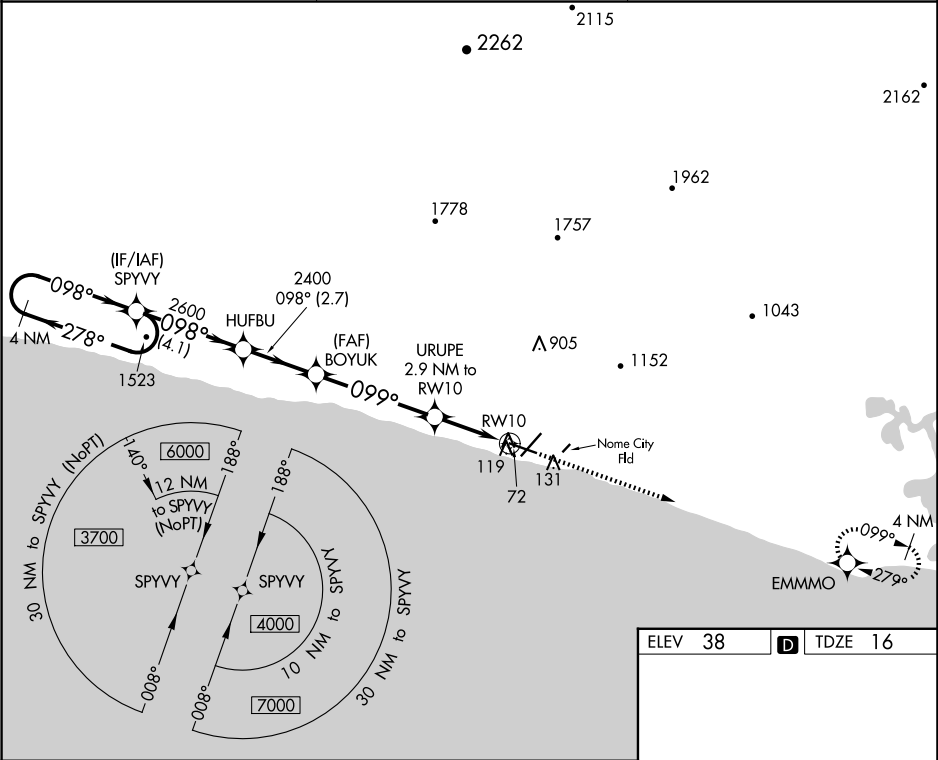
WAAS CH <b>40434</b> <b>W10A</b>	APP CRS <b>099°</b>	Rwy Idg <b>6009</b> TDZE <b>16</b> Apt Elev <b>38</b>
--	------------------------	---

RNAV (GPS) RWY 10

NOME (OME)(PAOM)

<div><div>▼</div><div>DME/DME RNP-0.3 NA. Helicopter visibility reduction below 1 SM NA. Night Landing: Rwy 21 NA, Rwy 10 operational VGSI required, remain on or above VGSI glidepath until threshold. Circling NA for Cats C and D north of Rwy 10-28.</div></div>	MISSED APPROACH: Climb to 3000 direct EMMMO and hold.
--	---

AFIS <b>119.925</b>	ANCHORAGE CENTER <b>133.3 290.4</b>	NOME RADIO <b>123.6 (CTAF) 0</b>
------------------------	--	-------------------------------------



4 NM Holding Pattern		SPYVY	HUFBU	BOYUK	URUPE 2.9 NM to RW10	3000 ↑	EMMMO ✦
3700	←278° 098°→	098°	2600	3.00° TCH 38	2400	099°	960
4.1 NM		2.7 NM		4.5 NM		2.9 NM	
CATEGORY	A	B	C	D			
LP MDA	340-1 324 (400-1)						
LNAV MDA	380-1 364 (400-1)						
CIRCLING	540-1	502 (600-1)	540-1½ 502 (600-1½)	700-2 662 (700-2)			
REIL Rwys 3 and 10 HIRL Rwy 10-28 MIRL Rwy 3-21							