

23278

VOR RWY 26
EDWARD G PITKA SR (GAL)(PAGA)

MISSED APPROACH: Climb to 600 then climbing left turn to 2300 on heading 047° and GAL VOR/DME R-077 to BRADL/6 DME and hold.

AWOS-3P 132.525	ANCHORAGE CENTER 127.0 290.2	FAIRBANKS RADIO 122.2	CTAF 123.0
---------------------------	--	---------------------------------	----------------------

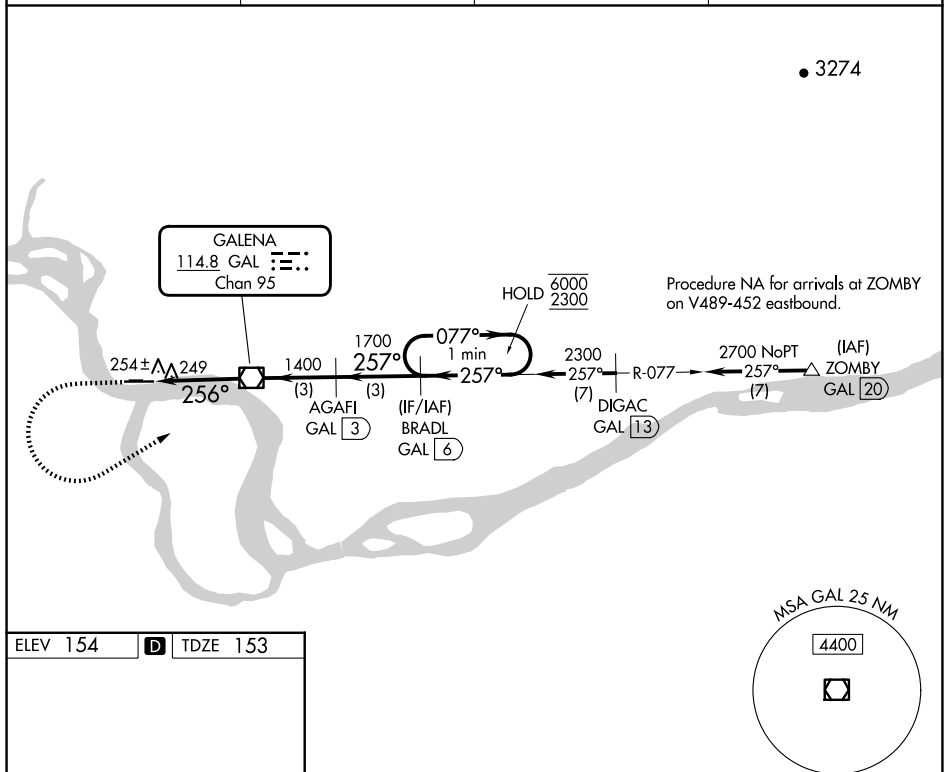


Diagram illustrating the MIRM Rwy 8-26 holding pattern. The pattern is a right turn, starting from the runway end (26) and proceeding towards the runway (8). The pattern includes a 256° turn, a 257° turn, and a 077° turn. The pattern is divided into four segments: A (0.9 NM), B (2.7 NM), C (3 NM), and D (3 NM). The pattern is labeled with 'S-26' and 'CIRCLING'. The diagram also shows the 'SKI STRIP' (2600 x 50) and the 'One Minute Holding Pattern'.

CATEGORY	A	B	C	D
S-26	520-1 367 (400-1)			
CIRCLING	560-1 406 (500-1)	620-1 466 (500-1)	620-1½ 466 (500-1½)	740-2 586 (600-2)

MIRM Rwy 8-26

EDWARD G PITKA SR (GAL)(PAGA)

VOR RWY 26

64°44'N-156°56'W