

WAAS CH 86907 W08A	APP CRS 076°	Rwy Idg 5600 TDZE 152 Apt Elev 154
--	------------------------	---

RNAV (GPS) RWY 8

EDWARD G PITKA SR (GAL)(PAGA)

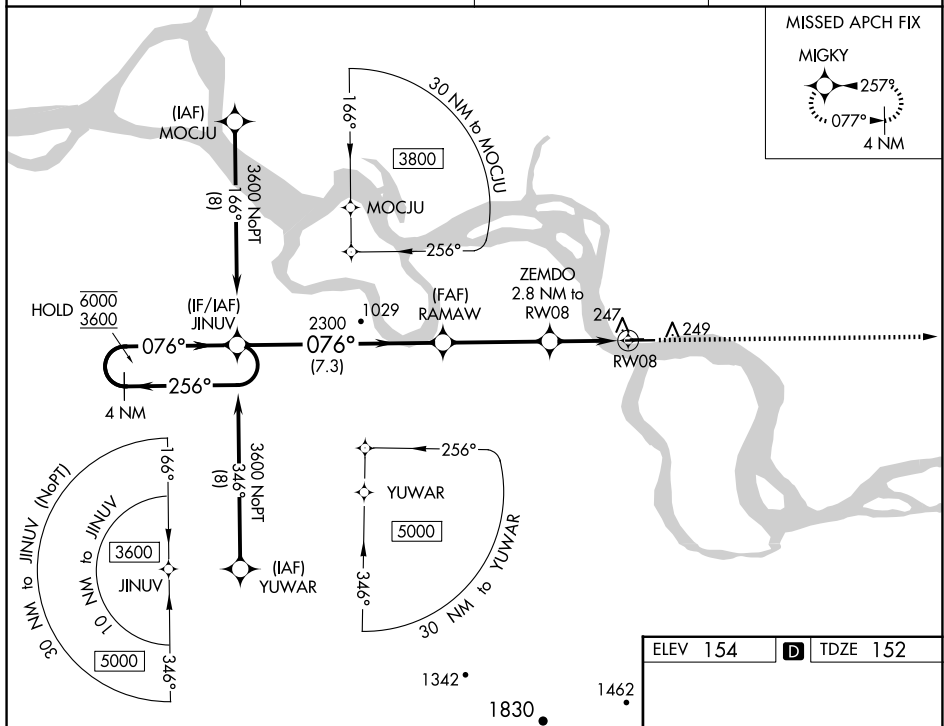
RNP APCH.



For uncompensated Baro-VNAV systems, LNAV/VNAV NA below -20°C or above 54°C.

MISSED APPROACH: Climb to 3600 direct MIGKY and hold.

AWOS-3P 132.525	ANCHORAGE CENTER 127.0 290.2	FAIRBANKS RADIO 122.2	CTAF 123.0 0
---------------------------	--	---------------------------------	------------------------



MIRA Rwy 8-26

4 NM Holding Pattern
JINUV
RAMAW
ZEMDO 2.8 NM to RW08
RW08

6000 ← 256°
3600 → 076°

GP 3.00°
TCH 42

* LNAV only

2300
1080

7.3 NM
3.8 NM
1.8 NM
1 NM

CATEGORY	A	B	C	D
LPV DA	402-1 250 (300-1)			
LNAV/VNAV DA	410-1 258 (300-1)			
LNAV MDA	500-1 348 (400-1)			
C CIRCLING	560-1 406 (500-1)	620-1 466 (500-1)	620-1½ 466 (500-1½)	720-2 566 (600-2)

SKI STRIP 2600 X 50
6000 X 100
24
26
076°

AK, 12 JUN 2025 to 07 AUG 2025

AK, 12 JUN 2025 to 07 AUG 2025