

GALENA, ALASKA

AL-1229 (FAA)

23166

WAAS CH 77707 W26A	APP CRS 257°	Rwy Idg 5200 TDZE 154 Apt Elev 154
--	------------------------	---

RNAV (GPS) RWY 26

EDWARD G PITKA SR (GAL)(PAGA)

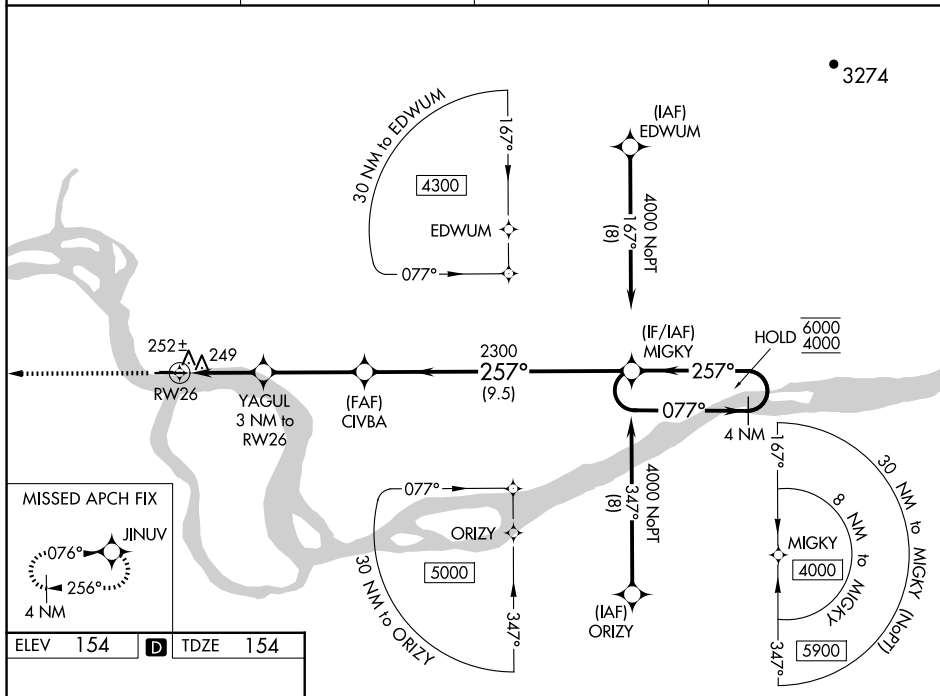
RNP APCH.



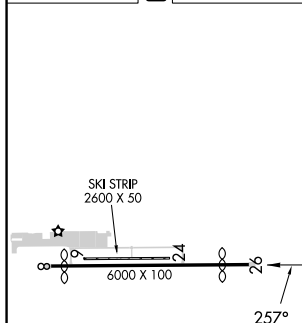
For uncompensated Baro-VNAV systems, LNAV/VNAV NA below -20°C or above 54°C.

MISSED APPROACH: Climb to 3600 direct JINUV and hold, continue climb-in-hold to 3600.

AWOS-3P 132.525	ANCHORAGE CENTER 127.0 290.2	FAIRBANKS RADIO 122.2	CTAF 123.0 0
---------------------------	--	---------------------------------	------------------------



ELEV	154	D	TDZE	154
------	-----	----------	------	-----

[illegible]

GALENA, ALASKA
Amdt 3 13SEP18

EDWARD G PITKA SR (GAL)(PAGA)

64°44'N-156°56'W

RNAV (GPS) RWY 26

AK, 12 JUN 2025 to 07 AUG 2025

AK, 12 JUN 2025 to 07 AUG 2025