

VOR/DME RWY 7  
RALPH M CALHOUN MEML (TAL) (PATA)

**MISSED APPROACH:** Climbing right turn to 4000 via heading 275° and TAL VOR/DME R-258 to OCULA 12 DME and hold, continue climb-in-hold to 4000.

ASOS <b>135.1</b>	ANCHORAGE CENTER <b>120.9 285.4</b>	FAIRBANKS RADIO <b>122.65</b>	CTAF <b>122.9 0</b>
----------------------	--	----------------------------------	------------------------

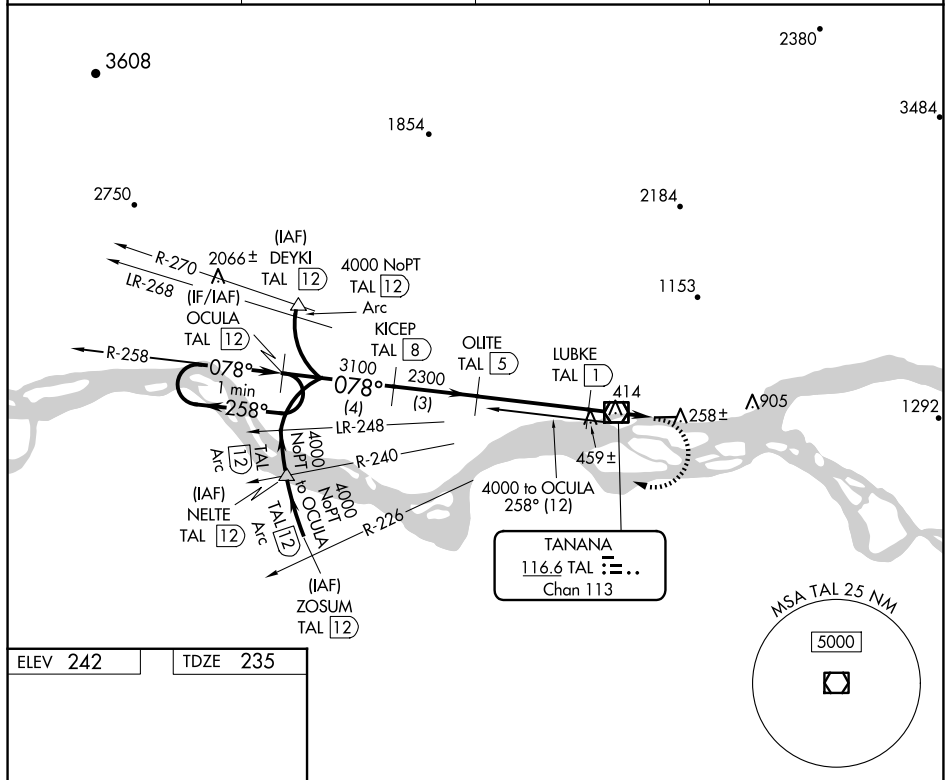


Diagram illustrating the MRL Rwy 7-25 instrument approach chart. The chart shows a 0.3% UP climb to 283 feet, followed by a 078° heading to 4000 feet. A holding pattern is established at 4000 feet. The descent begins at 3100 feet, with a 078° heading and a 258° turn. The descent continues to 2300 feet, then to 1120 feet, and finally to the runway at 1018 feet. The chart includes various navigation aids, including VOR/DME, and a table of approach categories and altitudes.

CATEGORY	A	B	C	D
S-7	720-1	485 (500-1)	720-1 $\frac{3}{8}$	485 (500-1 $\frac{3}{8}$ )
CIRCLING	740-1 498 (500-1)	760-1 518 (600-1)	1260-3	1018 (1100-3)

AK, 12 JUN 2025 to 07 AUG 2025