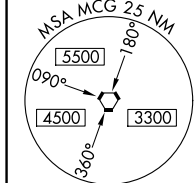


LOC/DME RWY 16
MC GRATH (MCG)(PAMC)

MISSED APPROACH: Climb to 1000 then climbing left turn to 4000 via MCG VORTAC R-102 to IRUCU/MCG 5 DME and hold, continue climb-in-hold to 4000.



ELEV 343

TDZE 343

162°

2000 X 60

23

91

391

001 X 9625

001

34

MIRL Rwy 5-23 and 16-34

REIL Rwy 16 and 34

AK, 12 JUN 2025 to 07 AUG 2025