

NDB ICW

525

APP CRS

051°

Rwy Idg

4600

TDZE

368

Apt Elev

368

NDB RWY 4L

NENANA MUNI (ENN) (PANN)

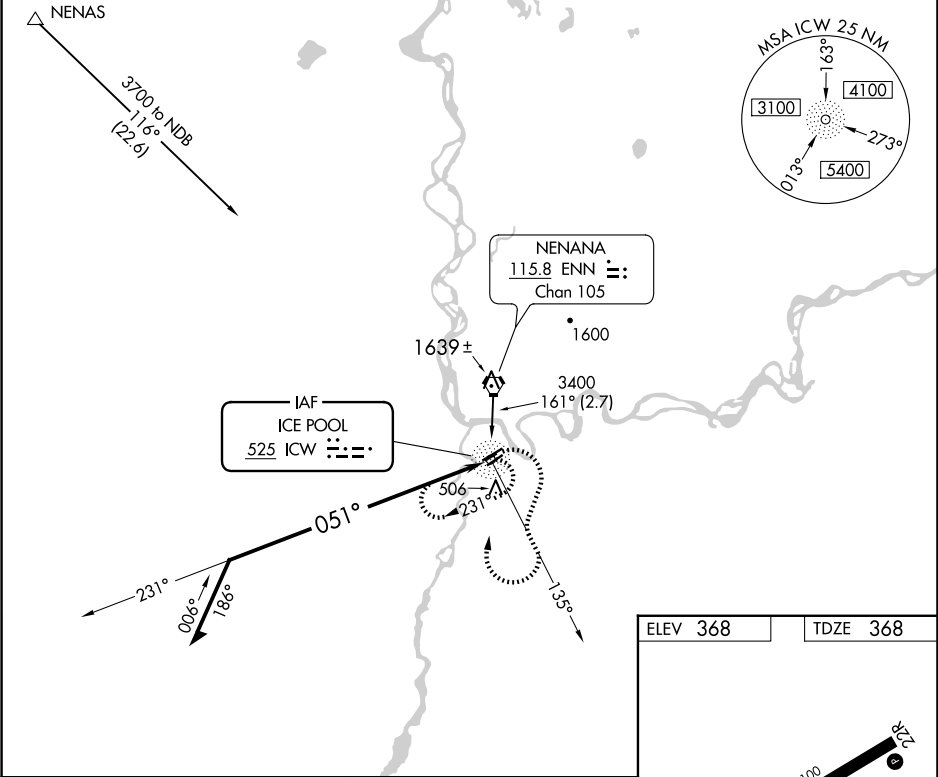
⚠

⚠

Circling NA northwest of Rwy 4L-22R. When local altimeter setting not received, use Fairbanks Intl altimeter setting and increase all MDAs 100 feet and S-4L Cat C and Circling Cats C/D visibility ¼ SM. Procedure NA at night. Circling NA to Rwys 4R, 22L, 4W and 22W. Rwy 4L helicopter visibility reduction below 1 SM NA.

MISSED APPROACH: Climbing right turn to 3200 on ICW NDB 135° bearing, then right turn direct ICW NDB and hold.

ASOS	FAIRBANKS APP CON	FAIRBANKS RADIO	CTAF
125.2	125.35 363.2	122.5	122.10



Remain within 10 NM

ICW NDB

3200

2400

231°

051°

3200

ICW 135°

ICW

ELEV 368

TDZE 368

051° to NDB

MIRL Rwys 4L-22R and 4R-22L

REIL Rwys 4L and 22R

CATEGORY	A	B	C	D
S-4L	1000-1	632 (700-1)	1000-1¾ 632 (700-1¾)	1000-2 632 (700-2)
CIRCLING	1000-1	632 (700-1)	1180-2½ 812 (900-2½)	1180-2¾ 812 (900-2¾)

AK, 12 JUN 2025 to 07 AUG 2025

AK, 12 JUN 2025 to 07 AUG 2025