


APP CRS	Rwy Ldg	3500
011°	TDZE	363
	Apt Elev	365

RNAV (GPS) RWY 1  
TALKEETNA(TKA)(PATK)

RNP APCH.

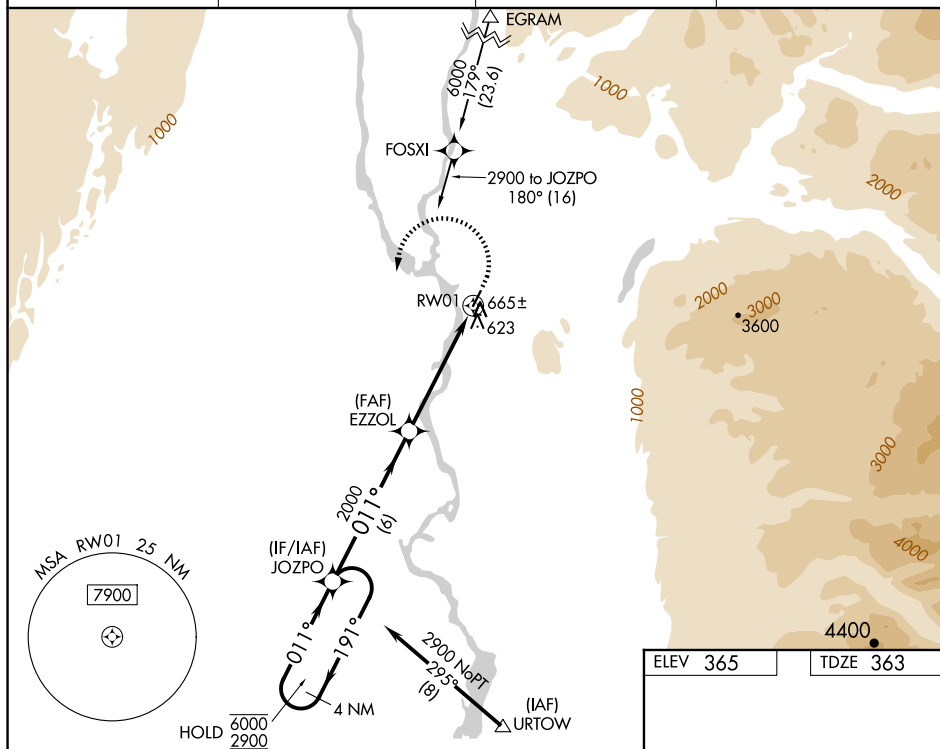
 Circling NA east of Rwy 1-19. Rwy 1 helicopter visibility reduction below  $\frac{3}{4}$  SM NA. For uncompensated Baro-VNAV systems, LNAV/VNAV NA below -20°C or above 54°C.

**MISSED APPROACH:** Climb to 800 then climbing left turn to 2900 direct JOZPO and hold.

AFIS  
135.2

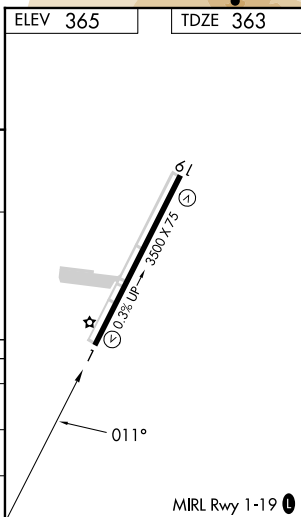
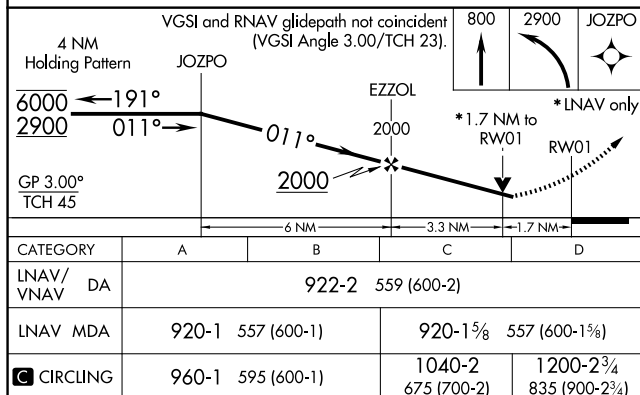
ANCHORAGE CENTER  
125.55 254.3

TALKEETNA RADIO  
**123.6 (CTAF) L**

UNICOM  
123.0

ELEV 365

TDZE 363



TALKEETNA, ALASKA

Amdt 1A 15AUG19

62°19'N-150°06'W

TALKEETNA(TKA)(PATK)  
RNAV (GPS) RWY 1