

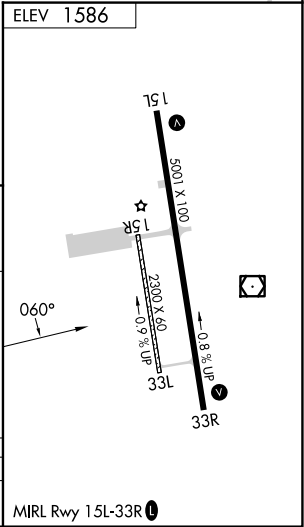
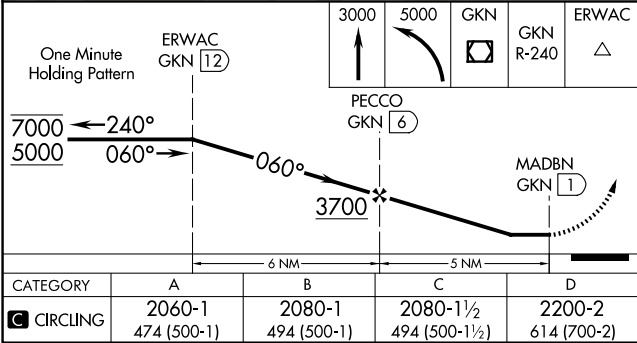
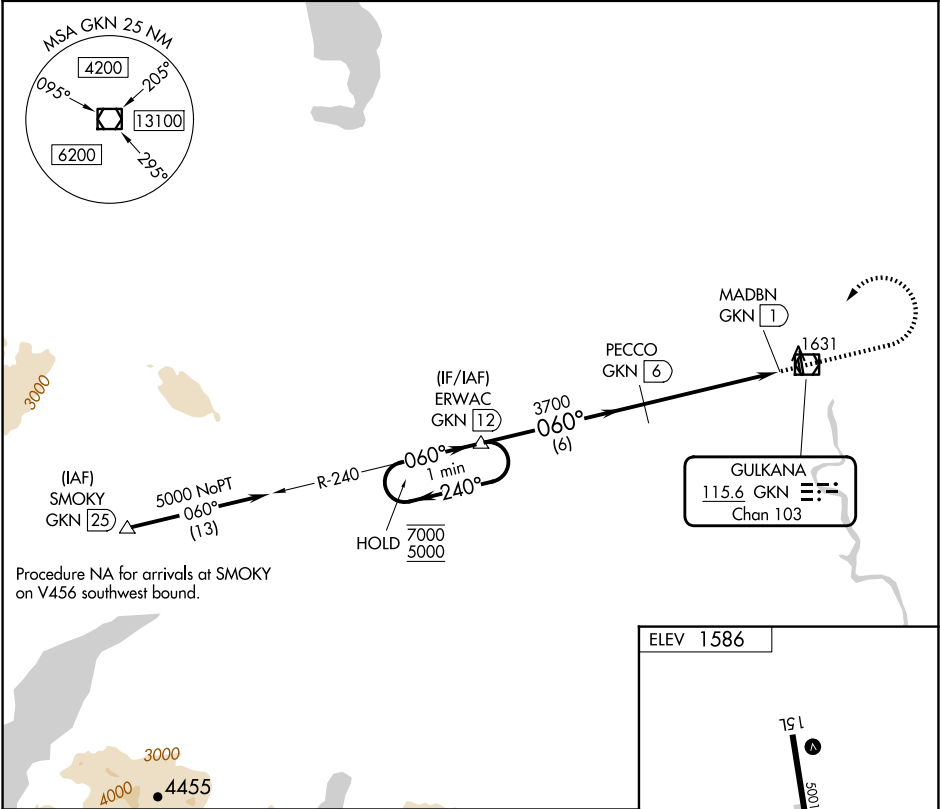
VOR/DME GKN 115.6 Chan 103	APP CRS 060°	Rwy Idg TDZE Apt Elev 1586	N/A N/A
--	------------------------	---	--------------------------

VOR-A

GULKANA (GKN) (PAGK)

DME required.	MISSED APPROACH: Climb to 3000 then climbing left turn to 5000 direct GKN VOR/DME and continue on GKN R-240 to ERWAC/GKN 12 DME and hold.
<div><div></div><div>Circling to Rwy 15R, Rwy 33L NA at night. Rwy 15R, 33L helicopter visibility reduction below 1 SM NA.</div></div>	

ASOS 134.85	ANCHORAGE CENTER 119.5 317.5	CTAF 122.9 0
-----------------------	--	------------------------



AK, 12 JUN 2025 to 07 AUG 2025

AK, 12 JUN 2025 to 07 AUG 2025