

WAAS CH 40343 W33A	APP CRS 334°	Rwy Idg TDZE Apt Elev	5001 1573 1586
--	------------------------	-----------------------------	---

RNAV (GPS) RWY 33R

GULKANA (GKN) (PAGK)

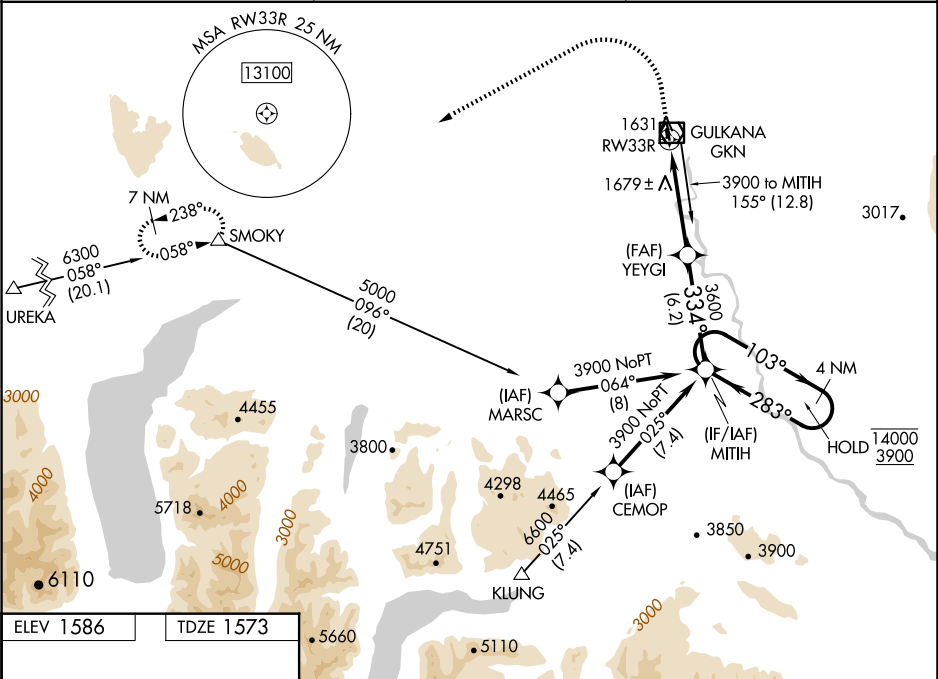
RNP APCH-GPS.

▼

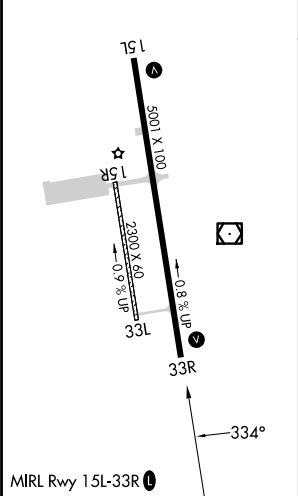
Circling Rwy 15R, 33L NA at night. Rwy 33R helicopter visibility reduction below ¾ SM NA. For uncompensated Baro-VNAV systems, LNAV/VNAV NA below -25°C or above 54°C.

MISSED APPROACH: Climb to 2100 then climbing left turn to 7000 direct SMOKY and hold, continue climb-in-hold to 7000.

ASOS 134.85	ANCHORAGE CENTER 119.5 317.5	CTAF 122.9
-----------------------	--	----------------------



ELEV 1586	TDZE 1573
-----------	-----------



2100 7000 SMOKY VGSi and RNAV glidepath not coincident (VGSi Angle 3.00/TCH 29).				
YEYGI MITIH 4 NM Holding Pattern				
1.3 NM to RWY 33R 1.3 NM 5 NM 6.2 NM				
CATEGORY	A	B	C	D
LPV DA	1823-1 250 (300-1)			
LNAV/VNAV DA	1890-1 317 (400-1)			
LNAV MDA	2000-1 427 (500-1)		2000-1¼ 427 (500-1¼)	
CIRCLING	2040-1 454 (500-1)	2080-1 494 (500-1)	2080-1½ 494 (500-1½)	2200-2 614 (700-2)