

VOR/DME or TACAN RWY 19

VORTAC BIG 114.9 Chan 96	APCH CRS 197°	Rwy Idg 8000 TDZE 1239 Arpt Elev 1285
--	-------------------------	--

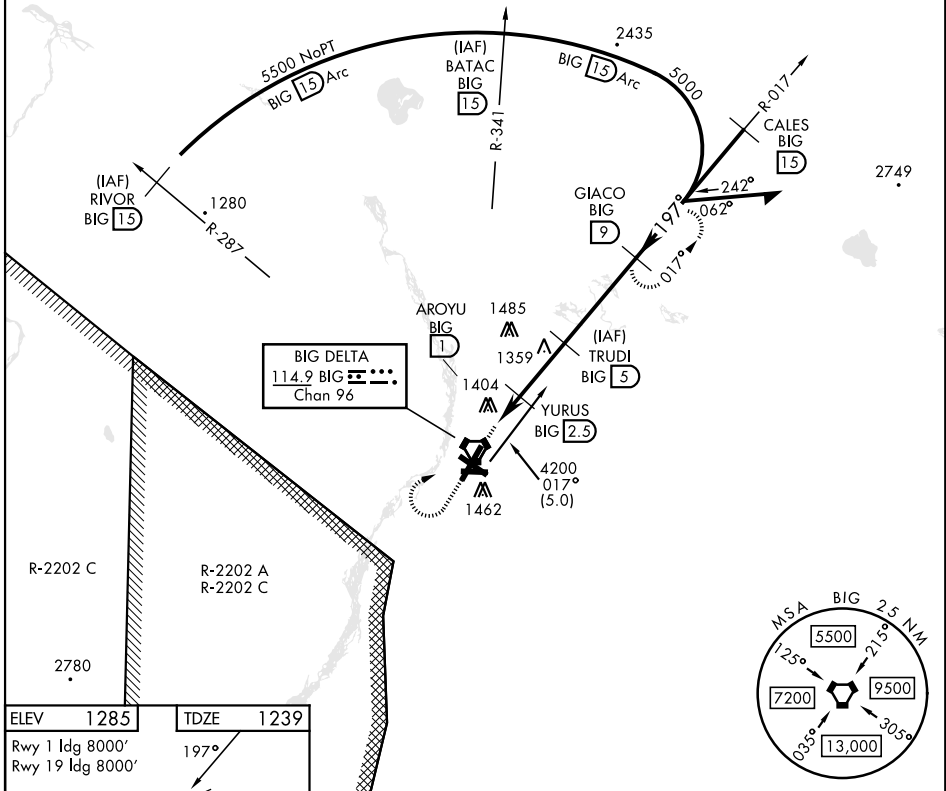
[USA]

ALLEN AAF (PABI)

*Circling not authorized East of Rwy 1-19.

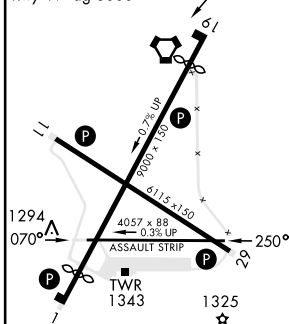
MISSED APPROACH: Climb to 2100, then climbing right turn to 4000 via BIG R-017 to GIACO/9 DME and hold.

ATIS 132.075	ASOS 135.65	ANCHORAGE CENTER 135.3 322.5	CTAF 122.9	TOWER ★ 119.8 235.775 40.8 (E) FM	GND CON 118.225 251.05
-----------------	----------------	---------------------------------	---------------	--------------------------------------	---------------------------



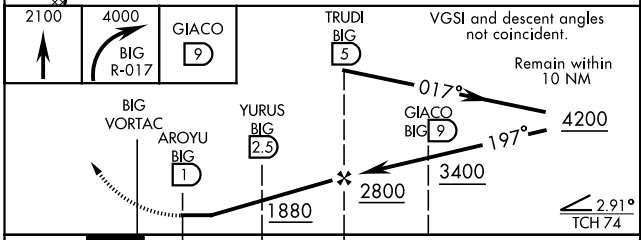
ELEV	1285	TDZE	1239
------	------	------	------

Rwy 1	ldg 8000'
Rwy 19	ldg 8000'



HIRL Rwy 1-19 and 11-2

MIRL Rwy 070° -
REIL Rwy 11-29



<div> <div>0.8 NM</div> <div>1.5 NM</div> <div>2.5 NM</div> </div>				
CATEGORY	A	B	C	D
S-19	1660-1 421	(400-1)	1660-1½ 421	(400-1½)
CIRCLING *	1720-1 435 (500-1)	1760-1 475 (500-1)	1760-1½ 475 (500-½)	1860-2 575 (600-2)

DELTA JUNCTION/FORT GREELY, ALASKA

64°00'N-145°43'W

ALLEN AAF (PABI)

Amdt 2B 05DEC19

VOR/DME or TACAN RWY 19

AK, 12 JUN 2025 to 07 AUG 2025

AK, 12 JUN 2025 to 07 AUG 2025