

## RNAV (GPS) RWY 19

APCH CRS	Rwy Idg	<b>8000</b>
<b>187°</b>	TDZE	<b>1239</b>
	Arpt Elev	<b>1285</b>

[USA]

ALLEN AAF (PABI)

RNP APCH - GPS

**T** \* Circling not authorized East of Rwy 1-19.

**MISSED APPROACH:** Climbing right turn to 5000, direct  
AYJAY and hold.

ATIS  
**132.075**

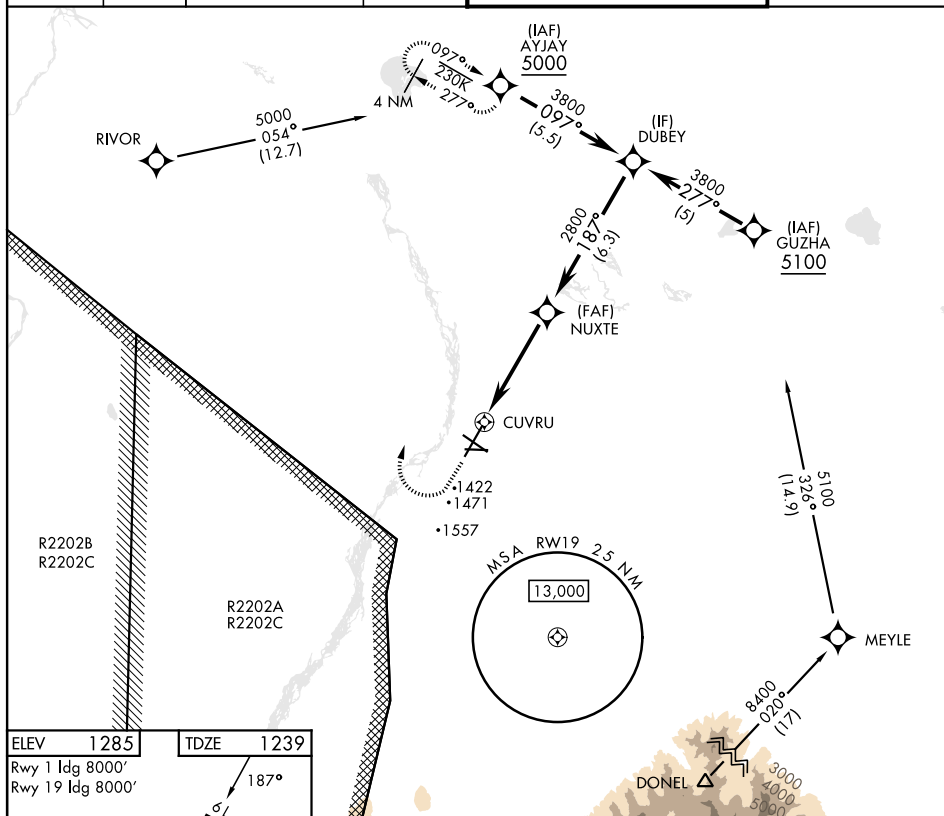
ASOS  
135.65

ANCHORAGE CENTER  
135.3 322.5

CTAF  
122.9 **L**

TOWER★  
119.8 235.775 40.8 (E) FM

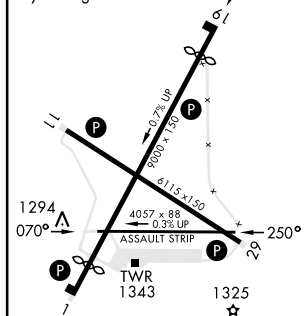
GND CON  
118.225 251.05



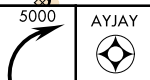
ELEV	1285	TDZE	1239
------	------	------	------

Rwy 1	ldg 8000'
Rwy 19	ldg 8000'

TDZE	1239
------	------

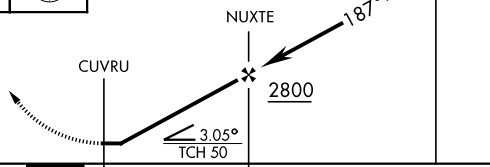



HIRL Rwy 1-19 and 11-29 **L**  
MIRL Rwy 070°-250° **L**  
REIL Rwy 11-29



and descent angles not coincident (VGSI angle 3.00/TCH 74).

DUBEY  
3800



CATEGORY	A	B	C	D
LNAB MDA	1740-1 501 (500-1)		1740-1½ 501 (500-1½)	
 CIRCLING*	1740-1 455 (500-1)	1780-1 495 (500-1)	1860-1½ 575 (600-1½)	2040-2½ 755 (800-2½)

DELTA JUNCTION/FORT GREELY, ALASKA

64°00'N-145°43'W

ALLEN AAF (PABI)

Amdt 1 10AUG23

## RNAV (GPS) RWY 19

AK, 12 JUN 2025 to 07 AUG 2025

AK, 12 JUN 2025 to 07 AUG 2025