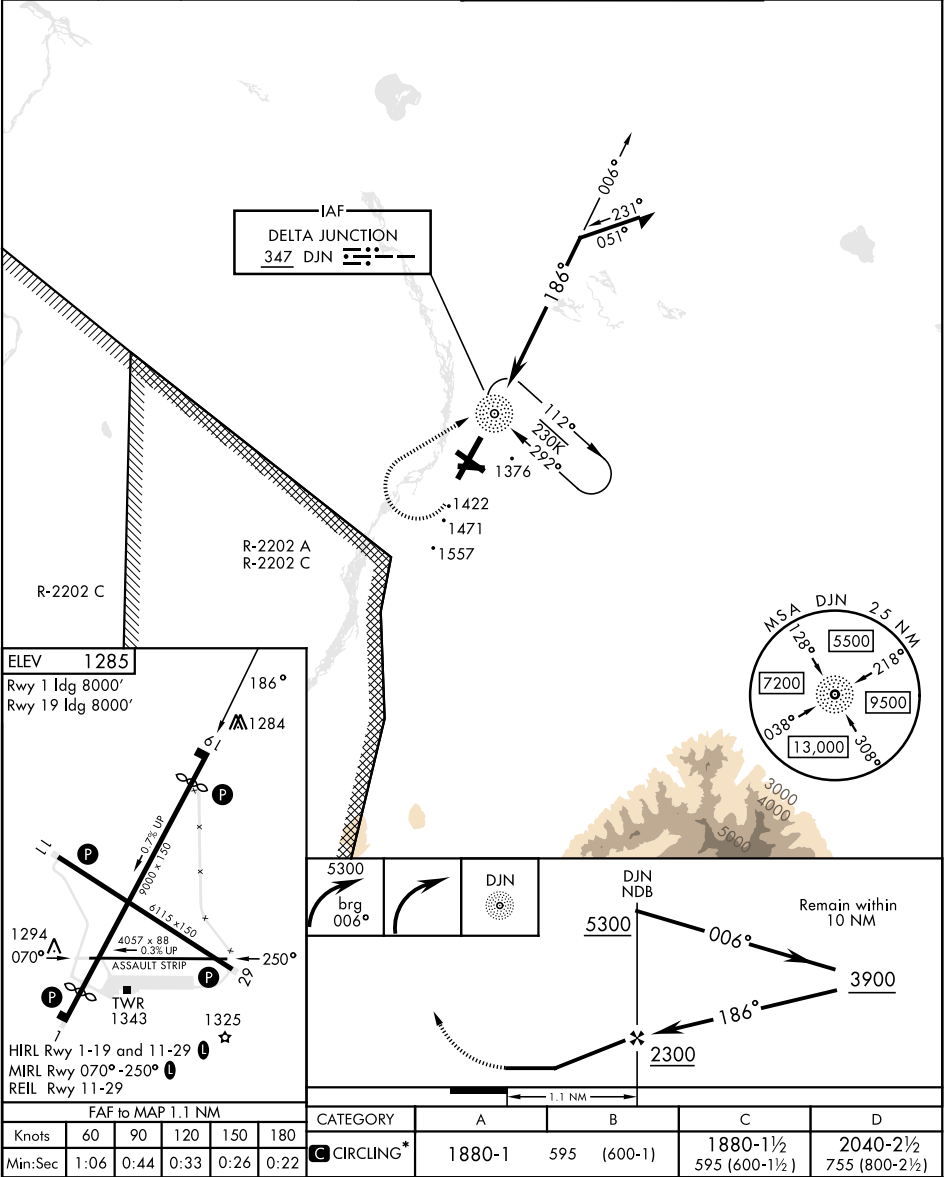


NDB DJN 347		APCH CRS 186°	Rwy Idg TDZE Arprt Elev N/A N/A 1285	[USA]	ALLEN AAF (PABI)
RNAV or RADAR required. ▼ *Circling not authorized East of Rwy 1-19.				MISSED APPROACH: Climbing right turn to 5300 via 006° bearing from DJN NDB, then right turn direct DJN NDB and hold.	
ATIS 132.075	ASOS 135.65	ANCHORAGE CENTER 135.3 322.5		CTAF 122.9 0	TOWER ★ 119.8 235.775 40.8 (E) FM
				GND CON 118.225 251.05	



AK, 12 JUN 2025 to 07 AUG 2025

AK, 12 JUN 2025 to 07 AUG 2025