

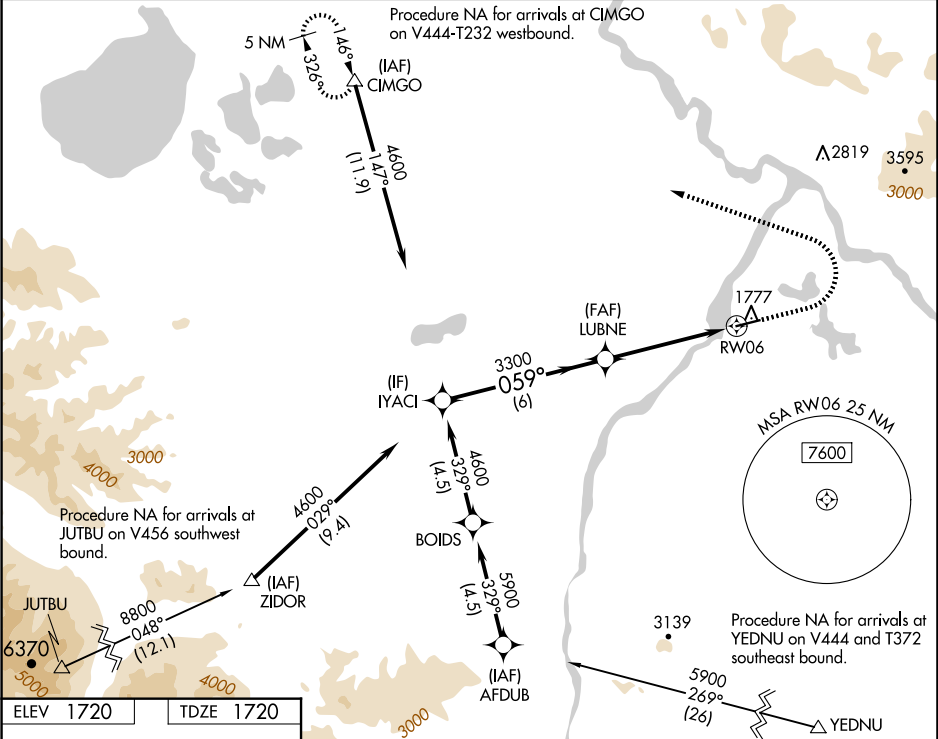
WAAS CH 65646 W06A	APP CRS 059°	Rwy Idg TDZE 1720 Apt Elev 1720
--	------------------------	---

RNAV (GPS) RWY 6

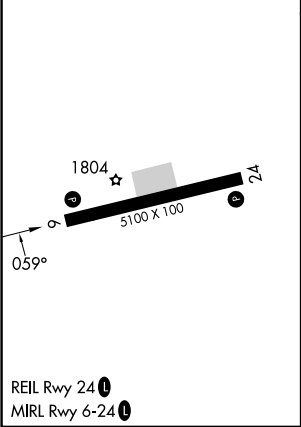
NORTHWAY (ORT)(PAOR)

RNP APCH - GPS.	MISSED APPROACH: Climb to 2200 then climbing left turn to 4800 direct CIMGO and hold.
<div><div><div>▼</div><div>✈</div></div><div>Rwy 6 helicopter visibility reduction below ¾ SM NA. For uncompensated Baro-VNAV systems, LNAV/VNAV NA below -23°C or above 54°C.</div></div>	

ASOS 135.4	ANCHORAGE CENTER 126.55 323.0	NORTHWAY RADIO 123.6 (CTAF) 0
----------------------	---	---



ELEV 1720	TDZE 1720
-----------	-----------



YACI	LUBNE	2200	4800	CIMGO
4600	3300			
GP 3.00°				
TCH 39				
	6 NM	3.5 NM	1.3 NM	
CATEGORY	A	B	C	D
LPV DA	1974-¾ 254 (300-¾)			
LNAV/VNAV DA	2030-⅞ 310 (400-⅞)			
LNAV MDA	2180-1	460 (500-1)	2180-1⅓	460 (500-1⅓)
CIRCLING	2180-1	460 (500-1)	2240-1½ 520 (600-1½)	2340-2 620 (700-2)