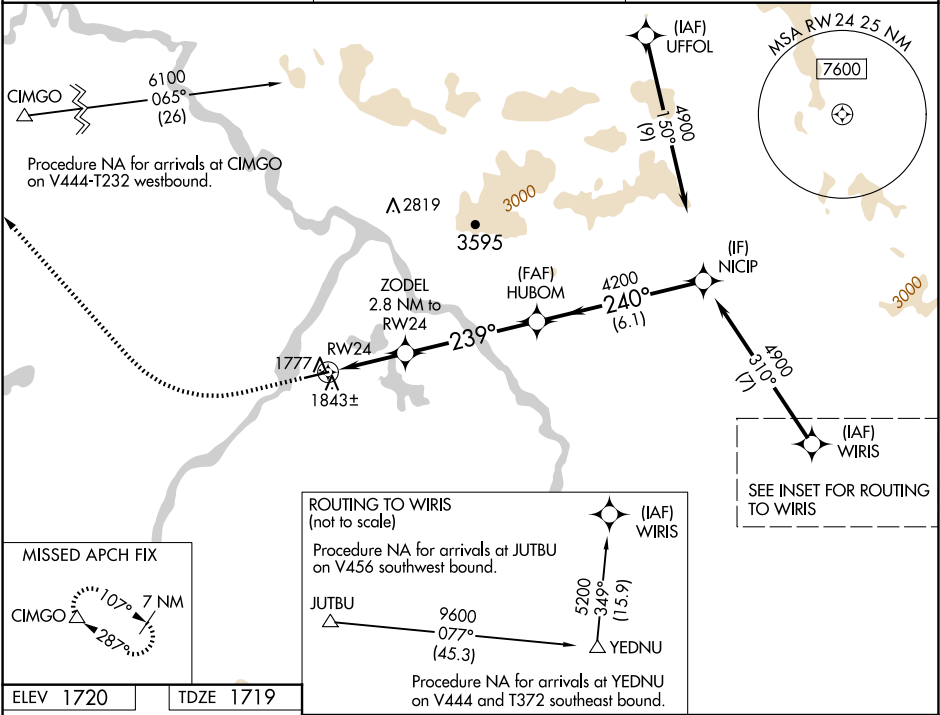


WAAS CH 48924 W24A	APP CRS 239°	Rwy Idg TDZE Apt Elev	5100 1719 1720
--	------------------------	-----------------------------	---

RNAV (GPS) RWY 24
NORTHWAY (ORT)(PAOR)

RNP APCH - GPS.	MISSED APPROACH: Climb to 2300 then climbing right turn to 7400 direct CIMGO and hold, continue climb-in-hold to 7400.
For uncompensated Baro-VNAV systems, LNAV/VNAV NA below -24°C or above 54°C.	

ASOS 135.4	ANCHORAGE CENTER 126.55 323.0	NORTHWAY RADIO 123.6 (CTAF) 0
----------------------	---	---



ELEV 1720	TDZE 1719	<div><div>2300</div><div>7400</div><div>CIMGO</div><div></div></div>			
		<div><div>HUBOM</div><div>NICIP</div><div>ZODEL 2.8 NM to RW24</div><div>1.1 NM to RW24</div><div>1.8 NM</div><div>4.8 NM</div><div>6.1 NM</div><div>GP 3.00° TCH 36</div></div>			
CATEGORY		A	B	C	D
LPV DA		1969-¾ 250 (300-¾)			
LNAV/VNAV DA		2004-⅞ 285 (300-⅞)			
LNAV MDA		2100-1	381 (400-1)	2100-1½	381 (400-1½)
CIRCLING		2160-1 440 (500-1)	2180-1 460 (500-1)	2240-1½ 520 (600-1½)	2340-2 620 (700-2)

AK, 12 JUN 2025 to 07 AUG 2025

AK, 12 JUN 2025 to 07 AUG 2025