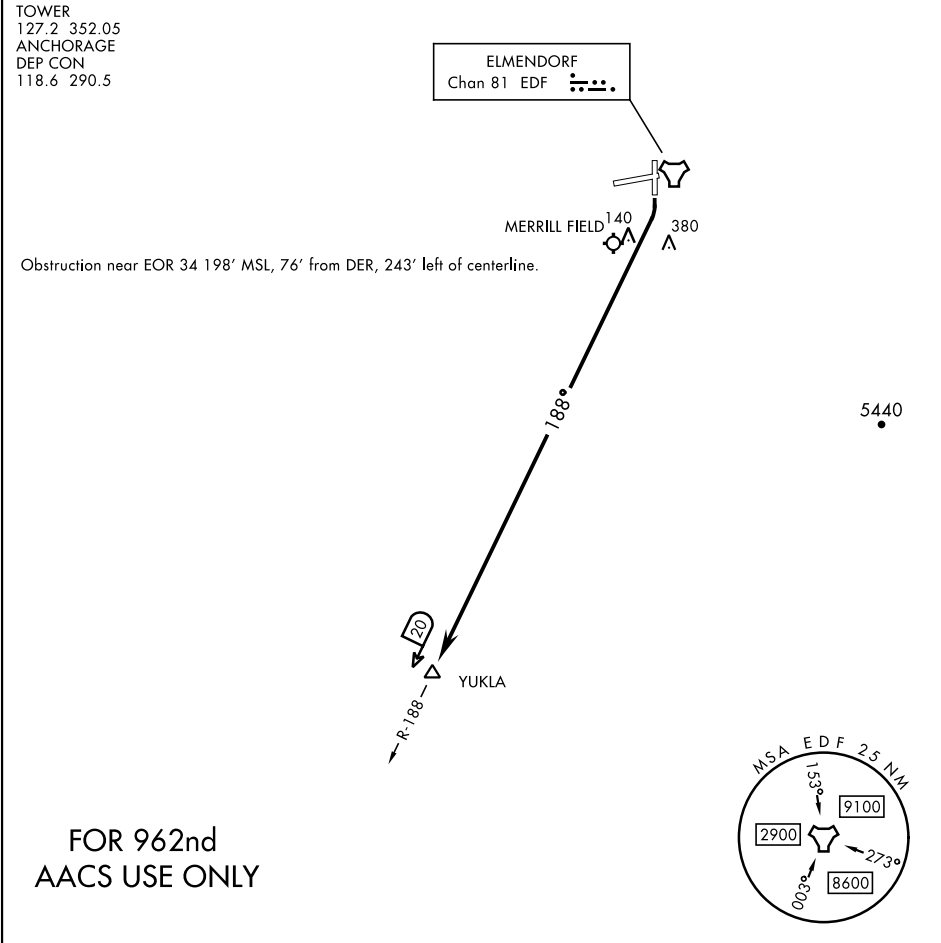


ATIS ★ 124.3 273.5	RADAR required	Rwy	Knots	60	120	180	240	300	360
CLNC DEL		16	V/V(fpm)	232	464	696	928	1160	1392

Minimum Climb Rate to 600



▼

DEPARTURE ROUTE DESCRIPTION

TAKEOFF RUNWAY 16: Climbing right turn, intercept the EDF TACAN R-188 direct YUKLA. Climb to ATC assigned altitude.

AK, 12 JUN 2025 to 07 AUG 2025

AK, 12 JUN 2025 to 07 AUG 2025