

TACAN Y RWY 16

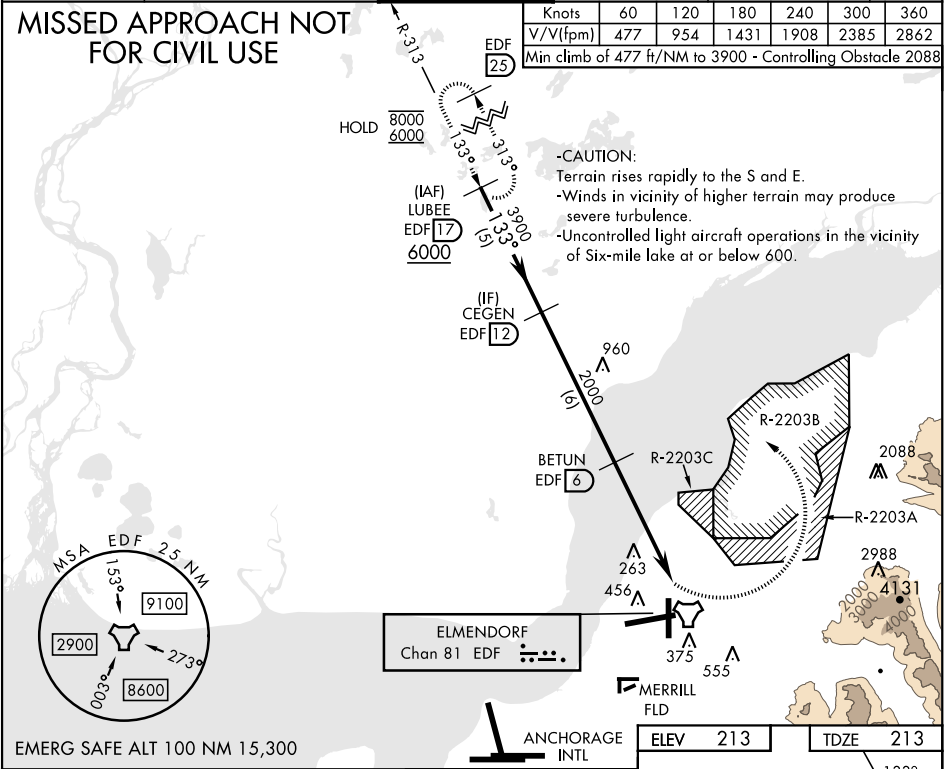
TACAN	EDF	APCH CRS	Rwy Idg	7493
Chan	81	133°	TDZE	213
			Arpt Elev	213

[USAF]

ELMENDORF AFB (PAED)

★ Circling not authorized SW of Rwy 6 and 34. CAT E aircraft remain within 4.5 NM of runway when executing circling maneuver.	MISSED APPROACH: Climbing left turn to 6000 via EDF R-313 to LUBEE and hold. Continue climb-in-hold to 6000.
--	--

ATIS ★ 124.3 273.5	ANCHORAGE APP CON 118.6 290.5 (N) 123.8 259.3 (S)	TOWER 127.2 352.05	GND CON 121.8 275.8	CLNC DEL 128.8 306.925	PAR
-----------------------	---	-----------------------	------------------------	---------------------------	-----



VGSI and descent angles not coincident (VGSI Angle 3.00/TCH 47).					ELEV 213	TDZE 213
<p>LUBEE R-313 (EDF 17) 6000 CEGEN (EDF 12) 3900 BETUN (EDF 6) 2000 ALNOK (EDF 1.8) 2000 TACAN 2000 3.08° TCH 56 4.2 NM 1.2 NM</p>					<p>LUBEE R-313 (EDF 17) 6000 CEGEN (EDF 12) 3900 BETUN (EDF 6) 2000 ALNOK (EDF 1.8) 2000 TACAN 2000 3.08° TCH 56 4.2 NM 1.2 NM</p>	
CATEGORY	A	B	C	D	E	
S-16	NOT AUTHORIZED				680-136 467 (500-136)	
CIRCLING★	NOT AUTHORIZED				1480-3 1267 (1300-3)	

TACAN Y RWY 16

AK, 12 JUN 2025 to 07 AUG 2025

AK, 12 JUN 2025 to 07 AUG 2025