

TACAN RWY 6

TACAN	EDF	APCH CRS	Rwy Idg	10,000
Chan	81	062°	TDZE	175
			Arpt Elev	213

[USAF]

ELMENDORF AFB (PAED)

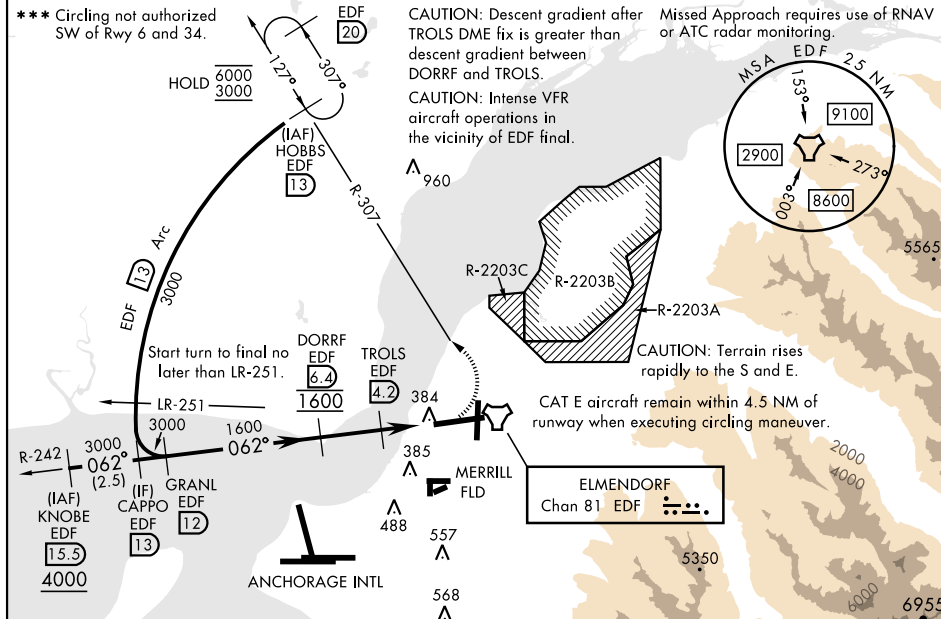
T * When ALS inop, increase CAT AB RVR to 55, vis to 1 mile, CAT CDE vis to 1 3/8 miles.
 ** Circling not authorized south of Rwy 6-24.



MISSED APPROACH: Climbing left turn to 3000 via EDF R-307 to HOBBS and hold.

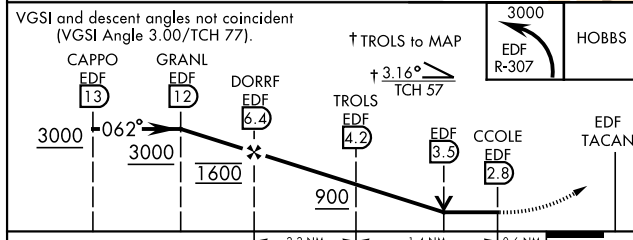
ATIS ★ 124.3 273.5	ANCHORAGE APP CON 118.6 290.5 (N) 123.8 259.3 (S)	TOWER 127.2 352.05	GND CON 121.8 275.8	CLNC DEL 128.8 306.925	PAR
-----------------------	---	-----------------------	------------------------	---------------------------	-----

*** Circling not authorized
SW of Rwy 6 and 34.



EMERG SAFE ALT 100 NM 15,300

VGSI and descent angles not coincident
(VGSI Angle 3.00/TCH 77).



CATEGORY	A	B	C	D	E
S-6 *	640/24 465 (500-½)		640/50 465 (500-1)		
C CIRCLING **	840-1 627 (700-1)		840-1½ 627 (700-1½)	840-2 627 (700-2)	940-2½ 727 (800-2½)
RWY 34 CIRCLING MINIMUMS					
C CIRCLING ***	840-1 627 (700-1)		920-2 707 (800-2)	1020-2½ 807 (900-2½)	1480-3 1267 (1300-3)

