

ANCHORAGE, ALASKA

## RNAV (GPS) RWY 6

APCH CRS <b>062°</b>	Rwy Idg <b>10,000</b> TDZE <b>175</b> Arpt Elev <b>213</b>
-------------------------	--

- (USAF)

ELMENDORF AFB (PAED)

RNP APCH

GPS required.

**T** \* When ALS inop increase RVR to 60, vis to 1 1/8 miles.

ALSF-1

**MISSED APPROACH:** Climb to 800 then climbing left turn to 3000 direct BGQ and hold.

ATIS★ 124.3 273.5	ANCHORAGE APP CON/DEP CON 118.6 290.5	TOWER 127.2 352.05	GND CON 121.8 275.8	CLNC DEL 128.8 306.925	PAR
----------------------	--	-----------------------	------------------------	---------------------------	-----

**\*\* When ALS inop increase CAT  
AB RVR to 55, vis to 1 mile,  
CAT CD vis to 1 3/8 miles.**

\*\*\* Circling NA SW  
of Rwy 6 and 34.

Course offset 0.04 degrees.

(IAF)  
RNICH

RNICH

(IF)  
COSAS

$$\begin{array}{r} \text{(FAF)} \\ \text{DOYEG} \\ \hline 1600 \end{array}$$

1600

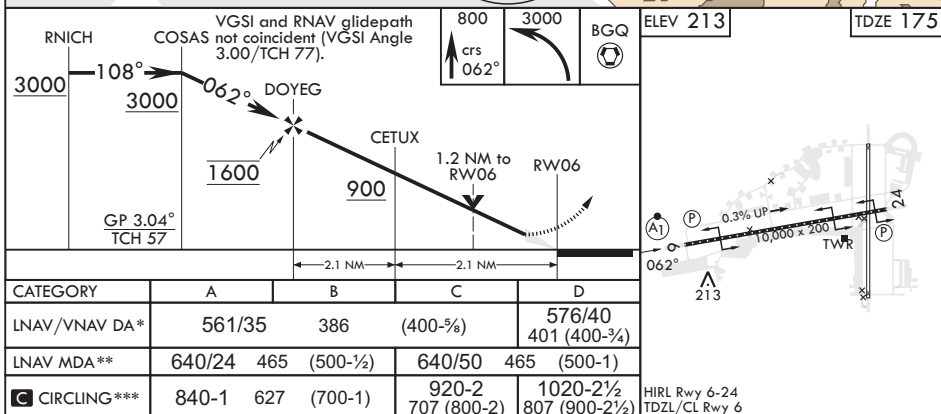
MSA RWU6 25 NM

For uncompensated Baro-VNAV systems, Procedure NA below  $-20^{\circ}\text{C}$  ( $-4^{\circ}\text{F}$ ).

**CAUTION:** Terrain rises rapidly to the South and East.

**CAUTION:** Intense VFR aircraft in the vicinity of Final Approach.

EMERG SAFE ALT 100 NM 15,300



ANCHORAGE, ALASKA

61°15'N - 149°48'W

ELMENDORF AFB (PAED)

Amdt 5 25JAN24

## RNAV (GPS) RWY 6

AK, 12 JUN 2025 to 07 AUG 2025