

ILS X RWY 6 (SA CAT I)

LOC I-EDF <b><u>110.3</u></b>	APCH CRS <b>062°</b>	Rwy Idg <b>10,000</b> TDZE <b>175</b> Arpt Elev <b>213</b>
----------------------------------	-------------------------	--

[USAF]

ELMENDORF AFB (PAED)

DME required

**T** Requires MAJCOM flying authority approval and use of HUD to DA.

ALSF-1

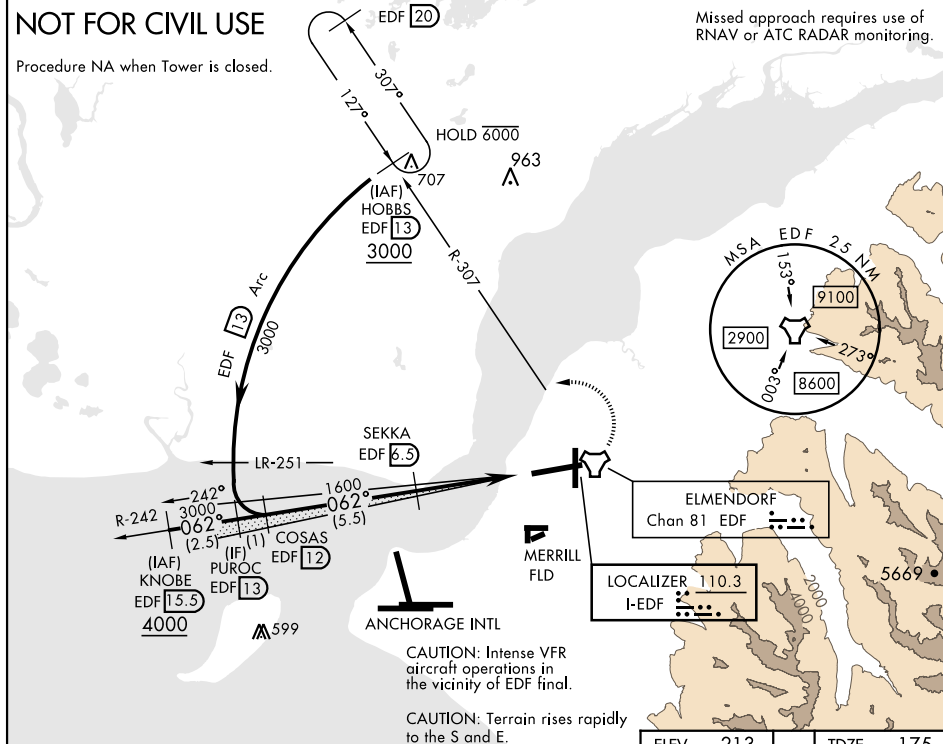
**MISSED APPROACH:** Climb to 900, then climbing left turn to 3000 via EDF R-307 to HOBBS and hold.

ATIS ★ 124.3 273.5	ANCHORAGE APP CON 118.6 290.5 123.8 259.3	TOWER 127.2 352.05	GND CON 121.8 275.8	CLNC DEL 128.8 306.925	PAR
-----------------------	---	-----------------------	------------------------	---------------------------	-----

NOT FOR CIVIL USE

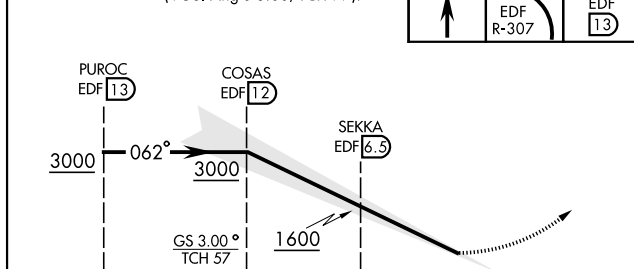
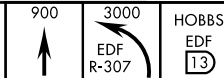
Procedure NA when Tower is closed.

Missed approach requires use of RNAV or ATC RADAR monitoring.



EMERG SAFE ALT 100 NM 15,300

VGSI and ILS glidepath not coincident  
(VGSI Angle 3.00/TCH 77).



CATEGORY	A	B	C	D
S-ILS 6	RA 138/14	150	DA 325	

HIRL Rwy 6-24  
TDZL/CL Rwy 6

