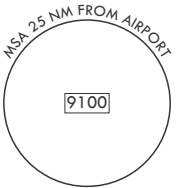
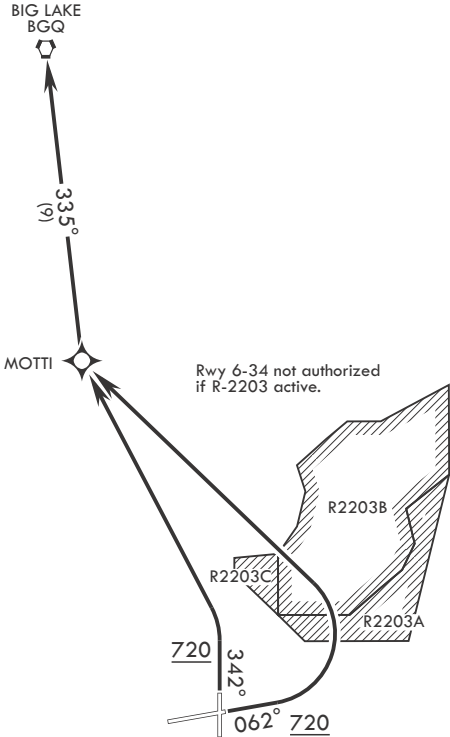


ATIS * 124.3 273.5
CLNC DEL 128.8 306.925
GND CON 121.8 275.8
TOWER 127.2 352.05
ANCHORAGE APP CON/DEP CON
118.6 290.5

RNAV1-GPS
RADAR required for non-GPS equipped aircraft.



DEPARTURE ROUTE DESCRIPTION

TAKEOFF RWY 6: Climb heading 062° to 720, then turn left direct MOTTI, thence via 335° track to BGQ VORTAC at assigned ATC altitude.

TAKEOFF RWY 34: Climb heading 342° to 720, then turn left direct MOTTI, thence via 335° track to BGQ VORTAC at assigned altitude.

AK, 12 JUN 2025 to 07 AUG 2025

AK, 12 JUN 2025 to 07 AUG 2025