

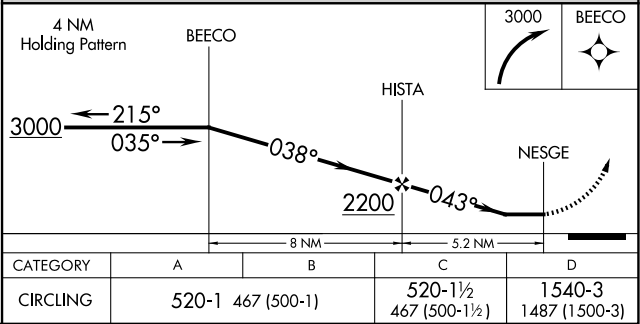
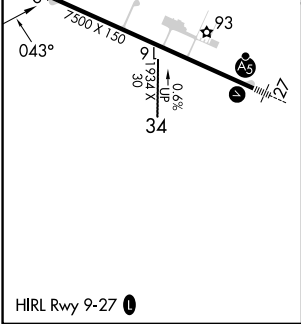
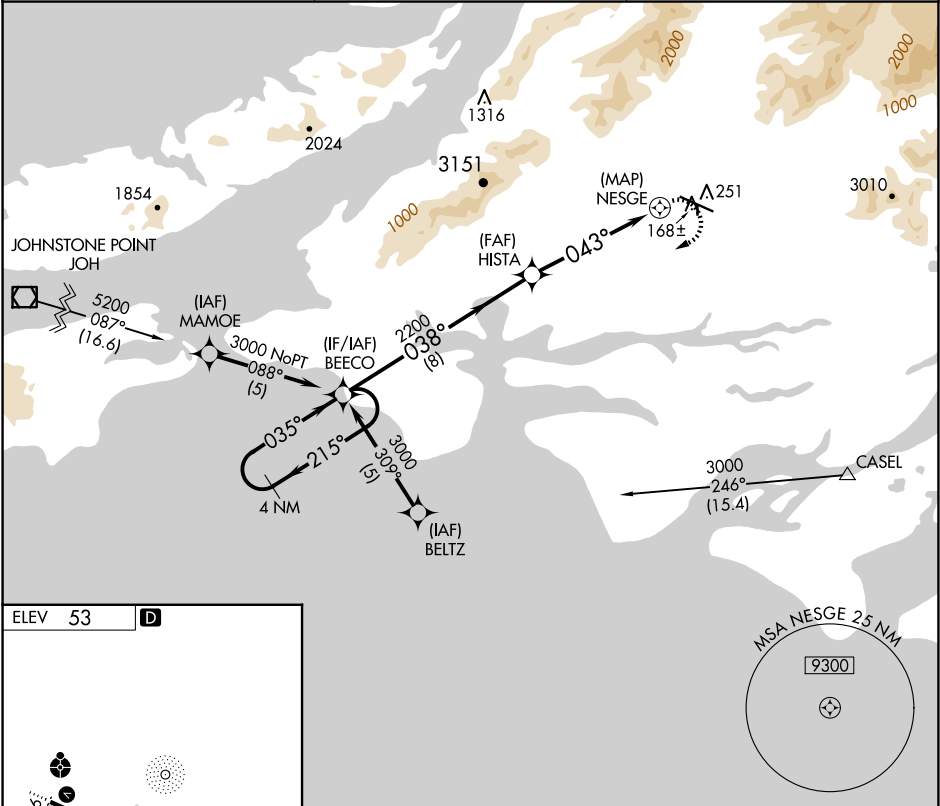
APP CRS	Rwy Idg	N/A
043°	TDZE	N/A
	Apt Elev	53

RNAV (GPS)-B

MERLE K (MUDHOLE) SMITH (CDV)(PACV)

RNP APCH-GPS.	
<div><div></div><div></div></div> <p>Circling to Rwy 16/34 NA at night. When local altimeter setting not received, use Valdez altimeter setting and increase all MDAs 120 feet. Circling NA north of Rwy 9/27. Rwy 16/34 helicopter visibility reduction below 1 SM NA.</p>	MISSED APPROACH: Climbing right turn to 3000 direct BEECO and hold.

ASOS 134.8	ANCHORAGE CENTER 119.3 133.6 269.4	JUNEAU RADIO 122.2 123.6 (CTAF) 1
---------------	---------------------------------------	--------------------------------------



RNAV (GPS)-B

AK, 12 JUN 2025 to 07 AUG 2025

AK, 12 JUN 2025 to 07 AUG 2025