

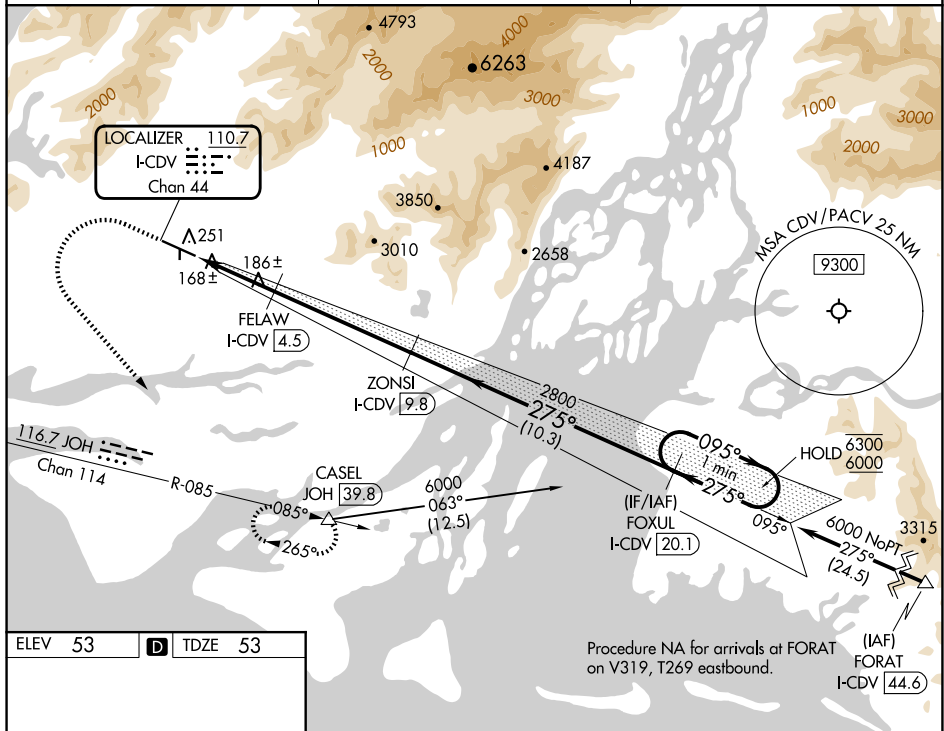
ILS or LOC RWY 27
MERLE K (MUDHOLE) SMITH (CDV)(PACV)

MISSED APPROACH: Climb to 700 then climbing left turn to 5000 on heading 120° and on JOH VOR/DME R-085 to CASEL/JOH 39.8 DME and hold, continue climb-in-hold to 5000.

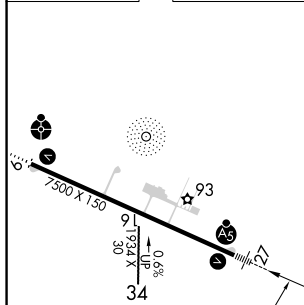
T	Cirding NA north of Rwy 9-27.
A	Cirding Rwy 16, 34 NA at night.

The diagram shows a cross-section of a roof structure. On the left, there is a circular symbol with the letter 'A' and the number '5' inside, representing a specific roof profile. To the right of this symbol is a vertical dashed line. Further to the right is a cross-section of a roof structure, showing a series of horizontal lines representing the roof's profile, with a vertical line indicating the centerline or a specific structural element.

ASOS 134.8	ANCHORAGE CENTER 119.3 133.6 269.4	JUNEAU RADIO 122.2 123.6 (CTAF) 0
----------------------	--	---



ELEV 53	D	TDZE 53
---------	----------	---------



700 ↑	5000 hdg 120°	JOH R-085	CASEL △	ZONSI I-CDV 9.8	FOXUL I-CDV 20.1	One Minute Holding Pattern
CATEGORY	A		B		C	D
S-ILS 27	328/24 275 (300-½)					
S-LOC 27	440/24 387 (400-½)			440/40 387 (400-¾)		
CIRCLING	480-1 427 (500-1)	520-1 467 (500-1)	520-1½ 467 (500-1½)		1540-3 1487 (1500-3)	