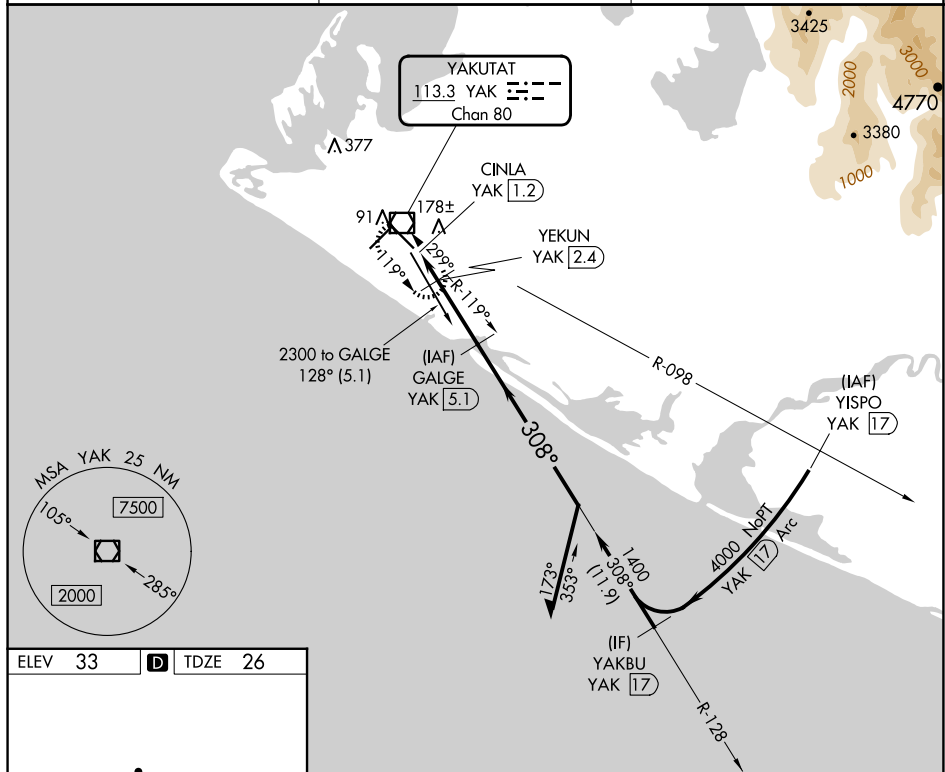


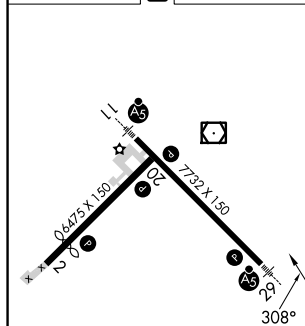
VOR/DME RWY 29
YAKUTAT (YAK) (PAYA)

MISSED APPROACH: Climb to 2000 direct YAK
VOR/DME and hold, continue climb-in-hold to 2000.

ASOS 135.75	ANCHORAGE CENTER 119.0 263.1	JUNEAU RADIO 123.6 (CTAF) ①
-----------------------	--	---------------------------------------

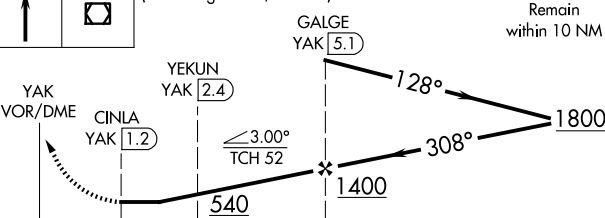


ELEV	33	D	TDZE	26
------	----	----------	------	----



2000	YAK	VGSI and descent angles not coincident (VGSI Angle 3.00/TCH 51).
------	-----	--

Remain
within 10 NM



	0.3	1.2 NM	2.7 NM	
CATEGORY	A	B	C	D
S-29	440-1 414 (500-1)			
CIRCLING	500-1 467 (500-1)	520-1 487 (500-1)	620-1½ 587 (600-1½)	720-2¼ 687 (700-2¼)