

YAKUTAT, ALASKA

AL-1193 (FAA)

25163

WAAS CH 66006 W29A	APP CRS 295°	Rwy Ldg 7732 TDZE 32 Apt Elev 40
--	------------------------	---

RNAV (GPS) RWY 29
YAKUTAT (YAK) (PAYA)

RNP APCH - GPS.

T Circling Rwy 20 NA at night. Rwy 29 helicopter visibility reduction below
A ¾ SM NA. Inop table does not apply to LPV, LNAV/VNAV all Cats, LNAV
Cat A and B. When Yakutat altimeter setting not received, procedure NA. For
uncompensated Baro-VNAV systems, LNAV/VNAV NA below -16°C or above
54°C. For inop AIS, increase LNAV Cat C and D visibility to 1¾ SM.

MALSR

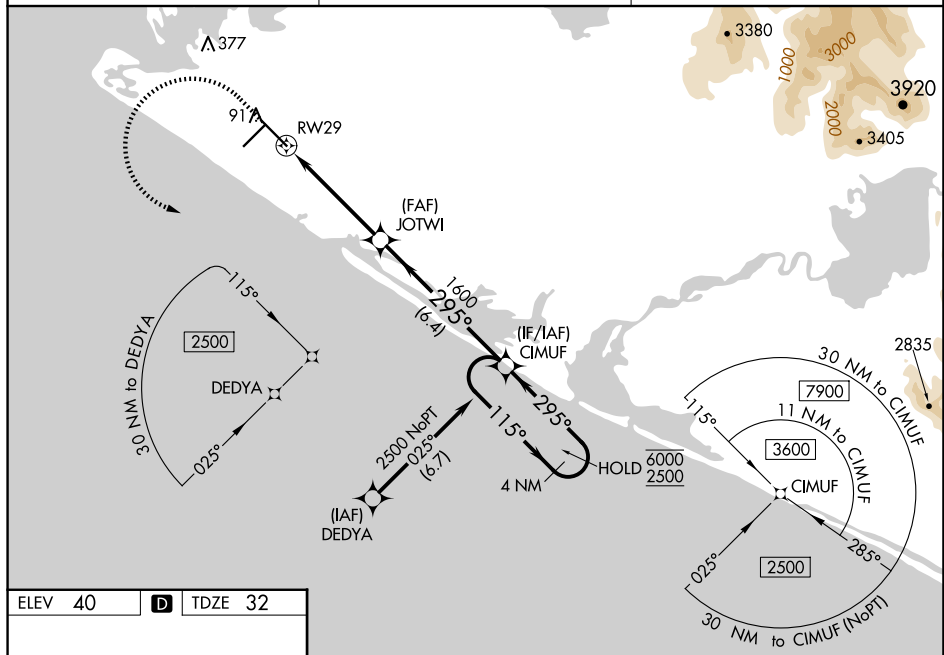


MISSED APPROACH: Climb to 600 then climbing left turn to 3000 direct CIMUF and hold, continue climb-in-hold to 3000.

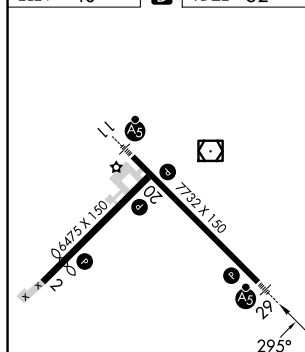
ASOS
135.75

ANCHORAGE CENTER
119.0 263.1

JUNEAU RADIO
123.6 (CTAF) **L**



ELEV 40	D	TDZE 32
---------	----------	---------



REIL Rwy 2 and 20 **L**
HIRL Rwy 2-20 and 11-29 **L**

[illegible]

YAKUTAT, ALASKA

Amdt 5 08SEP22

YAKUTAT (YAK) (PAYA)

RNAV (GPS) RWY 29

59°30'N-139°40'W

AK, 12 JUN 2025 to 07 AUG 2025

AK, 12 JUN 2025 to 07 AUG 2025