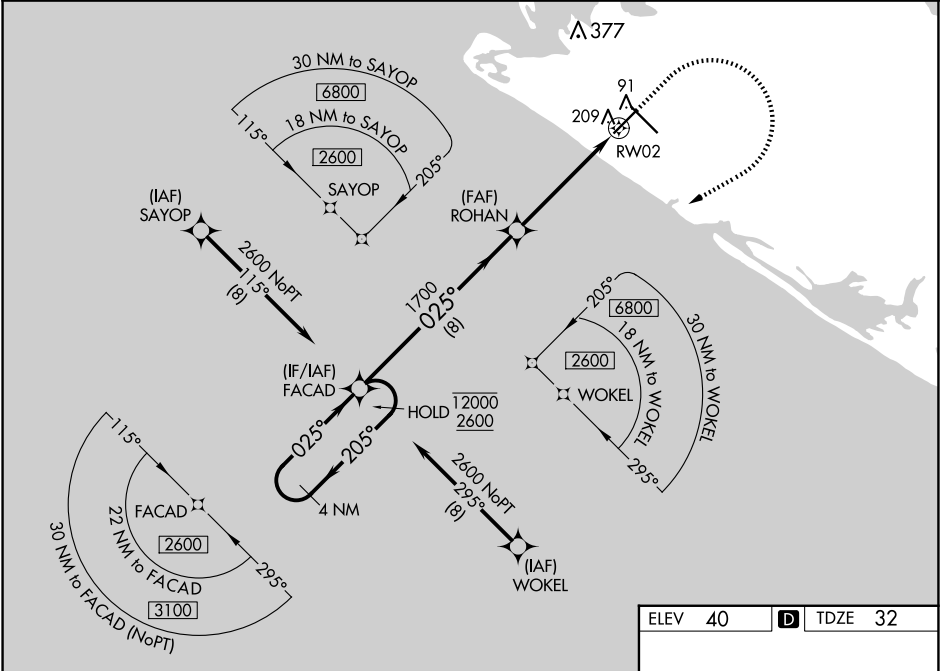





WAAS CH <b>78414</b> <b>W02A</b>	APP CRS <b>025°</b>	Rwy Idg TDZE Apt Elev <b>5087</b> <b>32</b> <b>40</b>
--	------------------------	--

RNAV (GPS) RWY 2  
YAKUTAT (YAK) (PAYA)

RNP APCH - GPS. ⚠ Circling Rwy 20 NA at night. Rwy 2 helicopter visibility reduction below ¾ SM NA. When Yakutat altimeter setting not received, procedure NA. For uncompensated Baro-VNAV systems, LNAV/VNAV NA below -16° C or above 54° C.	MISSED APPROACH: Climb to 500 then climbing right turn to 3000 direct FACAD and hold.
--	---

ASOS <b>135.75</b>	ANCHORAGE CENTER <b>119.0 263.1</b>	JUNEAU RADIO <b>123.6 (CTAF) 0</b>
-----------------------	--	---------------------------------------



4 NM Holding Pattern		FACAD		ROHAN		500 ↑		3000 		FACAD 	
12000 ← 205°				025° →		025°		1700		1.3 NM to RW02	
2600								1700		RW02	
GP 3.00° TCH 30				8 NM		3.9 NM		1.3			
CATEGORY	A	B	C	D							
LPV DA	297-1 265 (300-1)										
LNAV/ VNAV DA	479-1⅜ 447 (500-1⅜)										
LNAV MDA	460-1 428 (500-1)		460-1¼ 428 (500-1¼)								
 CIRCLING	520-1 480 (500-1)		540-1 500 (500-1)		820-2¼ 780 (800-2¼)		820-2½ 780 (800-2½)				

