

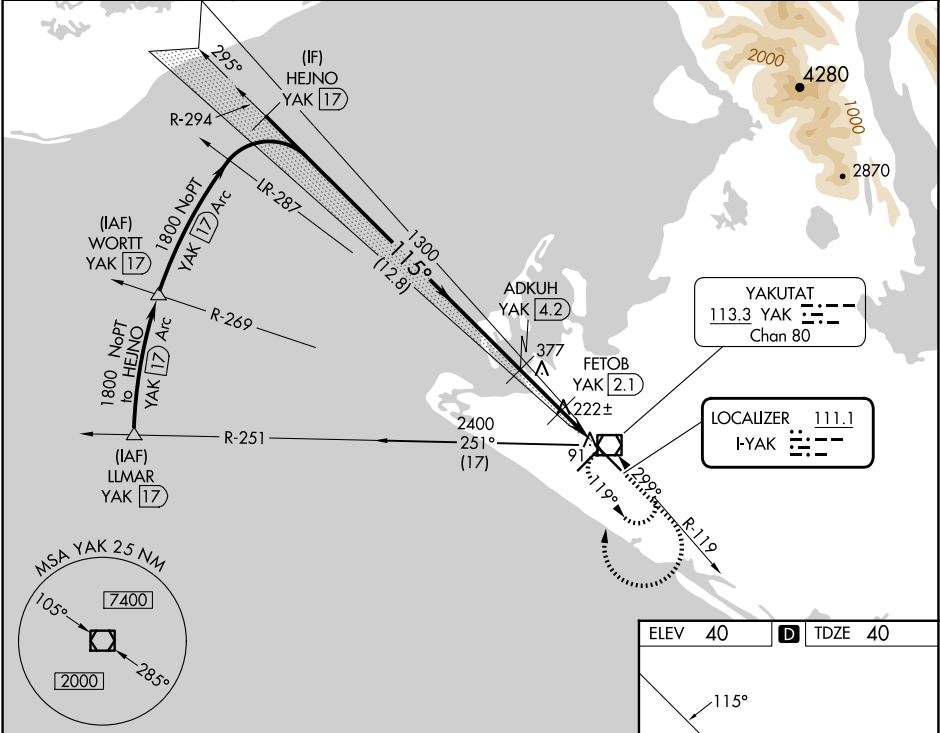
LOC I-YAK 111.1	APP CRS 115°	Rwy Ldg TDZE 40 Apt Elev 40
---------------------------	------------------------	---

ILS or LOC RWY 11

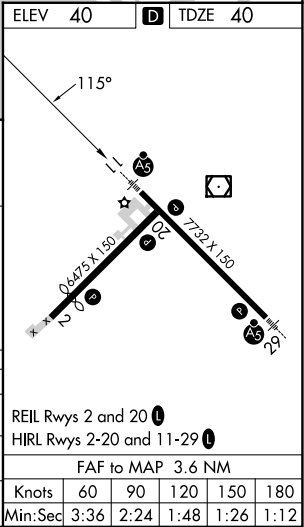
YAKUTAT (YAK) (PAYA)

DME required.	MALSR	MISSED APPROACH: Climb to 1000 then climbing right turn to 2400 direct YAK VOR/DME and hold, continue climb-in-hold to 2400.
<div><div></div><div>Circling Rwy 20 NA at night. When Yakutat altimeter setting not received, procedure NA. DME from YAK VOR/DME. DME use requires simultaneous reception of I-YAK and YAK DME.</div></div>	<div><div></div></div>	

ASOS 135.75	ANCHORAGE CENTER 119.0 263.1	JUNEAU RADIO 123.6 (CTAF) 0
-----------------------	--	---------------------------------------



<div><div>HEJNO YAK (17)</div><div>ADKUH YAK (4.2)</div><div>FETOB YAK (2.1)</div><div>YAK (1.6)</div><div>1000 2400 YAK</div><div>GS 3.00° TCH 53</div><div>1800 1300 640</div><div>115° 1300</div><div>12.8 NM 2.1 NM 0.5 1.2 NM</div></div>				
CATEGORY	A	B	C	D
S-ILS 11	240/24 200 (200-½)			
S-LOC 11	480/24	440 (500-½)	480/40	440 (500-¾)
<div></div> CIRCLING	520-1 480 (500-1)	540-1 500 (500-1)	820-2¼ 780 (800-2¼)	820-2½ 780 (800-2½)



AK, 12 JUN 2025 to 07 AUG 2025

AK, 12 JUN 2025 to 07 AUG 2025