
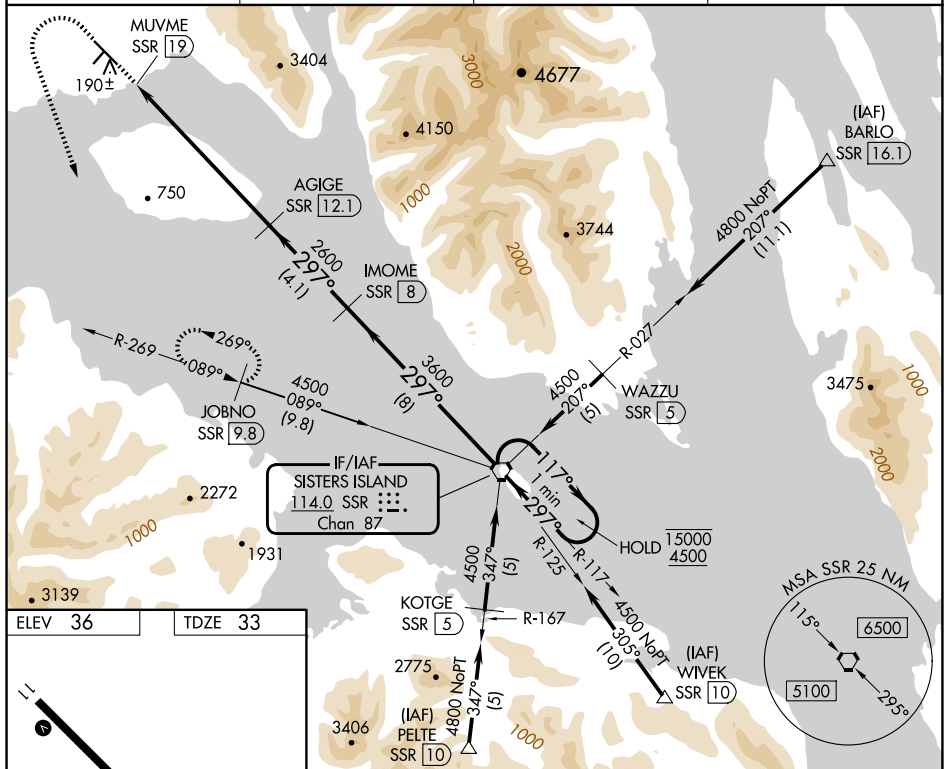


VOR RWY 29
GUSTAVUS (GST)(PAGS)

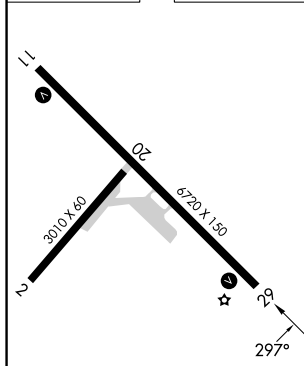
 Circling NA northeast of Rwy 11-29. Rwy 29 helicopter visibility reduction below 1 SM NA. Straight-in Rwy 29 NA at night, Circling Rwy 2, 20, 29 NA at night. When local altimeter setting not received, use HNH/PAOH altimeter setting and increase all MDAs 60 feet.

MISSED APPROACH: Climb to 2100 then climbing left turn to 5200 on heading 140° and SSR VORTAC R-269 to JOBNO/9.8 DME and hold, continue climb-in-hold to 5200.

AWOS-3P 125.9	ANCHORAGE CENTER 133.2 360.65	JUNEAU RADIO 122.65	CTAF 122.5
-------------------------	-----------------------------------------	-------------------------------	----------------------



ELEV 36		TDZE 33
---------	--	---------



MIRL Rwy 11-29 **L**
REIL Rwy 11 and 29 **L**

2100 ↑	5200 hdg 140°	SSR R-269	JOBNO SSR 9.8	IMOME SSR 8	SSR VORTAC	One Minute Holding Pattern
CATEGORY	A	B	C	D		
S-29	1300-1¼ 1267 (1300-1¼)	1300-1½ 1267 (1300-1½)	1300-3	1267 (1300-3)		
CIRCLING	1300-1¼ 1264 (1300-1¼)	1300-1½ 1264 (1300-1½)	1300-3	1264 (1300-3)		

AK, 12 JUN 2025 to 07 AUG 2025