


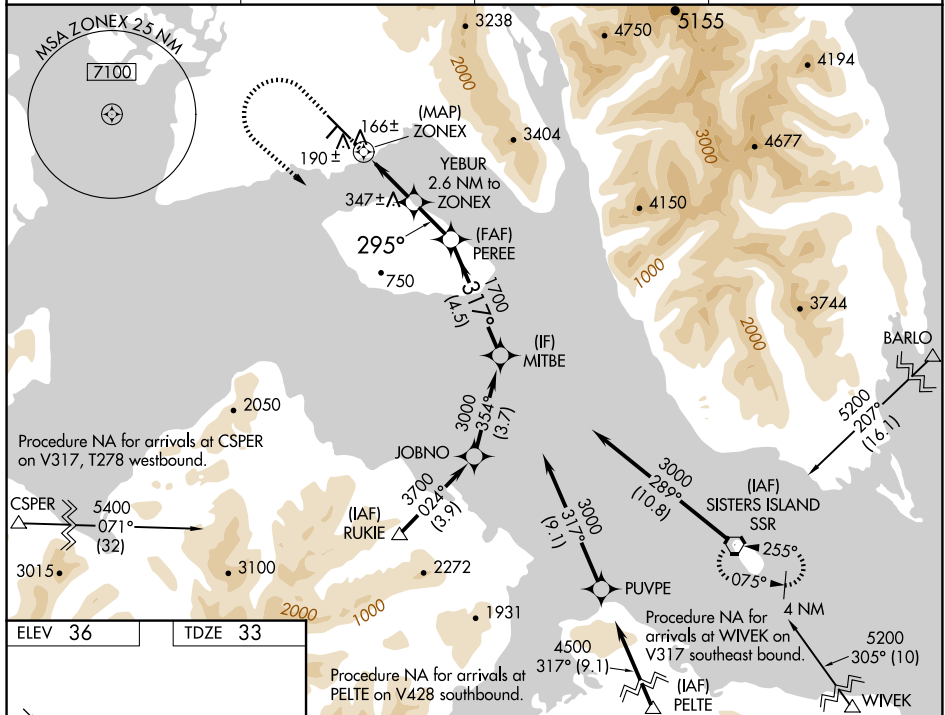


RNAV (GPS) RWY 29
GUSTAVUS(GST)(PAGS)

 Circling NA northeast of Rwy 11-29.
 Rwy 29 helicopter visibility reduction below $\frac{3}{4}$ SM NA.
 -17°C

MISSED APPROACH: (Do not exceed 210 KIAS until SSR VORTAC) Climb to 1000 then climbing left turn to 3000 direct SSR VORTAC and hold.

AWOS-3P 125.9	ANCHORAGE CENTER 133.2 360.65	JUNEAU RADIO 122.65	CTAF 122.5
-------------------------	---	-------------------------------	----------------------



1000 ↑		3000 ↙		SSR 					
		YEBUR 2.6 NM to ZONEX		PEREE 3.00° TCH 39		MITBE		3000	
		ZONEX		295°		317°		1700	
		0.7		2.6 NM		1.8 NM		4.5 NM	
CATEGORY		A		B		C		D	
LP MDA		420-1 387 (400-1)		420-1 $\frac{1}{8}$ 387 (400-1 $\frac{1}{8}$)					
LNAV MDA		660-1 627 (700-1)		660-1 $\frac{3}{4}$ 627 (700-1 $\frac{3}{4}$)					
C CIRCLING		660-1 624 (700-1)		960-2 $\frac{3}{4}$ 924 (1000-2 $\frac{3}{4}$)		1200-3 1164 (1200-3)			

GUSTAVUS(GST)(PAGS)
RNAV (GPS) RWY 29

AK, 12 JUN 2025 to 07 AUG 2025