

APP CRS	Rwy Ldg	8457
070°	TDZE	25
	Apt Elev	25

RNAV (GPS) V RWY 8
JUNEAU INTL (JNU)(PAJN)

RNP APCH - GPS.

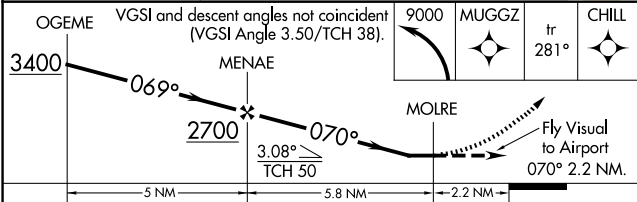
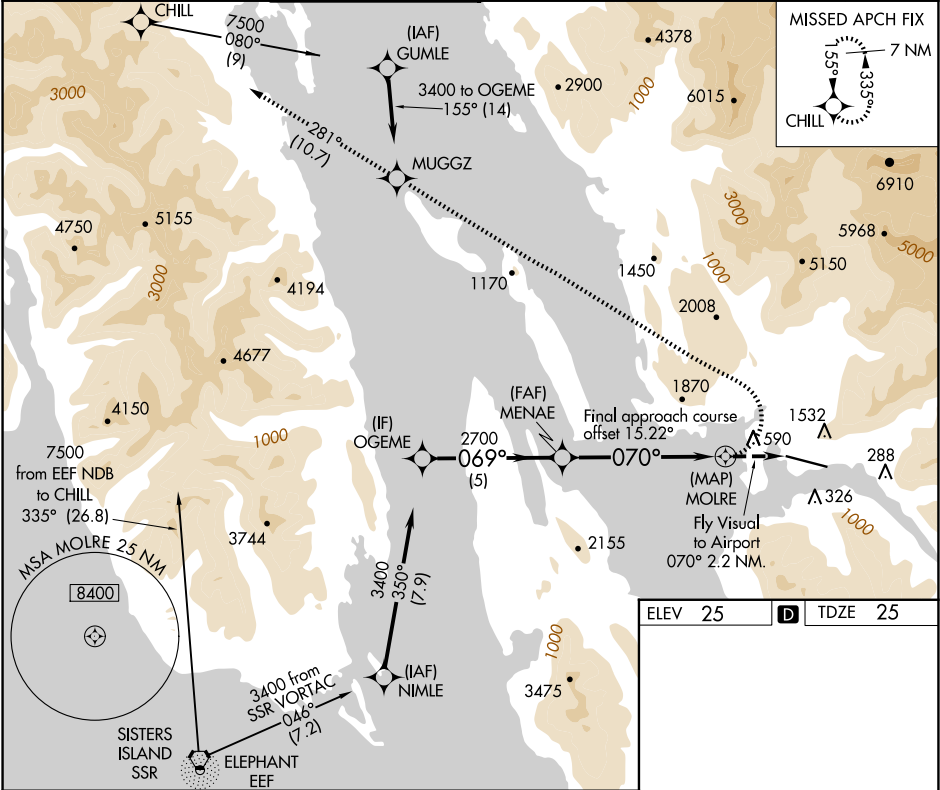
⚠ Circling NA at night. Rwy 8 helicopter visibility reduction below 1 SM NA. When Juneau altimeter setting not received, procedure NA.

⚠ 1°C When VGSI inop, procedure NA at night. Lead-in lights not aligned with final approach course. For inop Lead-in lights, increase visibility to 4 SM. Circling NA north of Rwy 8-26.

MALSF

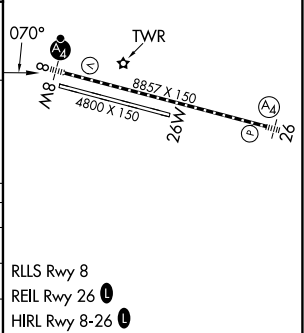
MISSED APPROACH: Climbing left turn to 9000 direct MUGGZ and on 281° track to CHILL and hold, continue climb-in-hold to 9000. * Missed approach requires minimum climb of 363 feet per NM to 3200.

ATIS	ANCHORAGE CENTER	JUNEAU TOWER*	GND CON	CLNC DEL	JUNEAU RADIO	UNICOM
135.2	133.9	118.7 (CTAF) 0 278.3	121.9	121.9	122.2	122.95



ELEV 25	TDZE 25
---------	---------

CATEGORY	A	B	C	D
LNAV MDA*	1880-2	1855 (1900-2)	NA	NA
LNAV MDA	2340-3	2315 (2400-3)	NA	NA
CIRCLING	2340-3	2315 (2400-3)	NA	NA



AK, 12 JUN 2025 to 07 AUG 2025

AK, 12 JUN 2025 to 07 AUG 2025