

TACAN NIP	APP CRS	Rwy Idg	8003
Chan 19	269°	TDZE	72
(108.2)		Apt Elev	80

TACAN RWY 27L

CECIL (VQQ)

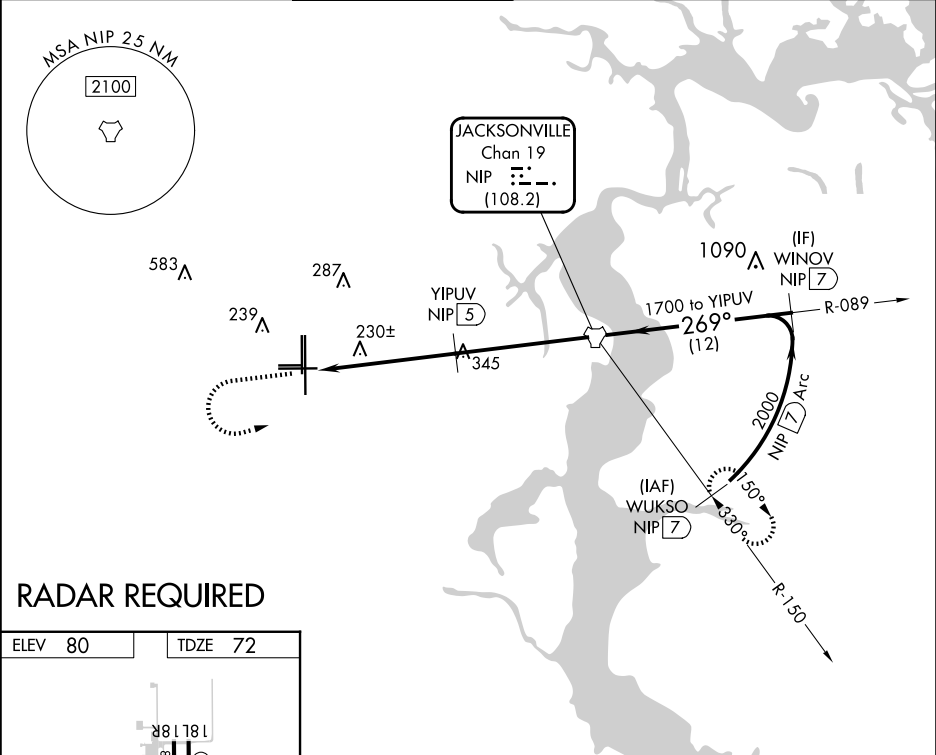
⚠

VDP NA with Jacksonville Intl altimeter setting. Helicopter visibility reduction below ¼ SM NA. When local altimeter setting not received, use Jacksonville Intl altimeter setting and increase all MDA 60 feet, increase S-27L Cats C, D, E visibility ½ mile.

MISSED APPROACH:

Climb to 700 then climbing left turn to 2100 direct NIP TACAN and continue on NIP TACAN R-150 to WUKSO/7 DME and hold.

ATIS	JACKSONVILLE APP CON	CECIL TOWER ★	GND CON	CLNC DEL	GCO
125.275	127.775 377.075	126.1 (CTAF) 235.625	121.625 226.675	123.975 254.25	135.075



RADAR REQUIRED

