

WAAS CH 82036 W36A	APP CRS 005°	Rwy Idg 12504 TDZE 72 Apt Elev 80
--	------------------------	--

RNAV (GPS) RWY 36R
CECIL (VQQ)

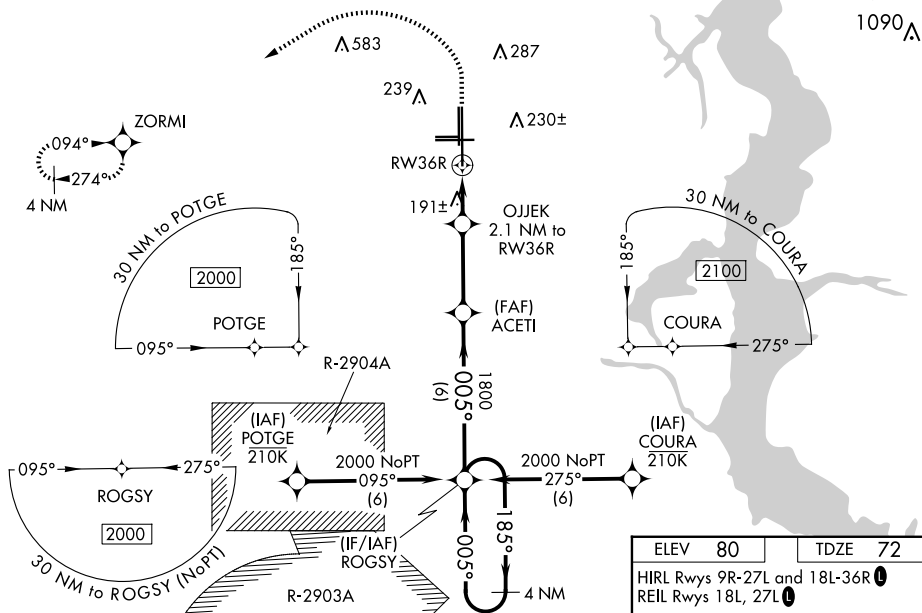
V Baro-VNAV and VDP NA when using Jacksonville Intl altimeter setting.
A For uncompensated Baro-VNAV systems, LNAV/VNAV NA below -15°C (5°F) or above 54°C (130°F). DME/DME RNP-0.3 NA. When local altimeter setting not received, use Jacksonville Intl altimeter setting and increase all DA 52 feet and all MDA 60 feet. Increase LNAV/VNAV all Cats visibility to 1 mile and LNAV Cats C, D visibility to ¾ mile.

MALSR



MISSED APPROACH:
Climb to 1000 then
climbing left turn to
2000 direct ZORMI
and hold.

ATIS 125.275	JACKSONVILLE APP CON 127.775 377.075	CECIL TOWER * 126.1 (CTAF) 0 235.625	GND CON 121.625 226.675	CLNC DEL 123.975 254.25	GCO 135.075
-----------------	---	---	----------------------------	----------------------------	----------------



4 NM Holding Pattern

VGSI and RNAV glidepath not coincident (VGSI Angle 3.00/TCH 66).

1000 2000 ZORNI

2000 ←185° 005° → 005°

GP 3.00° TCH 49

ACET1 1800

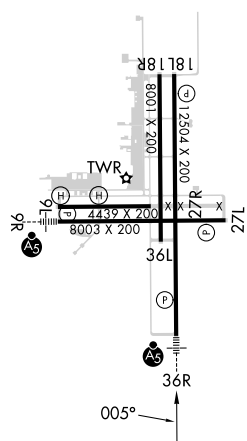
OJJEK 2.1 NM to RW36R


*1 NM to RW36R

*780

6 NM 3.2 NM 1.1 NM 1 NM

*LNAV only.



CATEGORY	A	B	C	D
LPV DA		272-1/2	200 (200-1/2)	
LNAV/ VNAV DA		467-7/8	395 (400-7/8)	
LNAV MDA	460-1/2	388 (400-1/2)	460-5/8	388 (400-5/8)
 CIRCLING	540-1 460 (500-1)	560-1 480 (500-1)	600-1 1/2 520 (600-1 1/2)	640-2 560 (600-2)