

WAAS CH <b>56616</b> <b>W18A</b>	APP CRS <b>185°</b>	Rwy Idg <b>12504</b> TDZE <b>79</b> Apt Elev <b>80</b>
--	------------------------	--

RNAV (GPS) RWY 18L

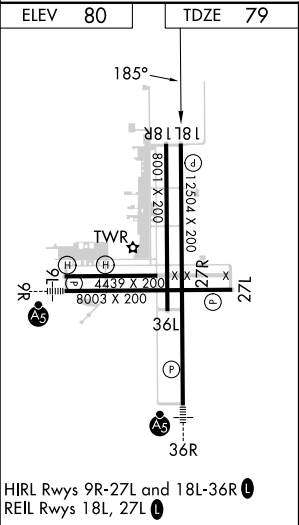
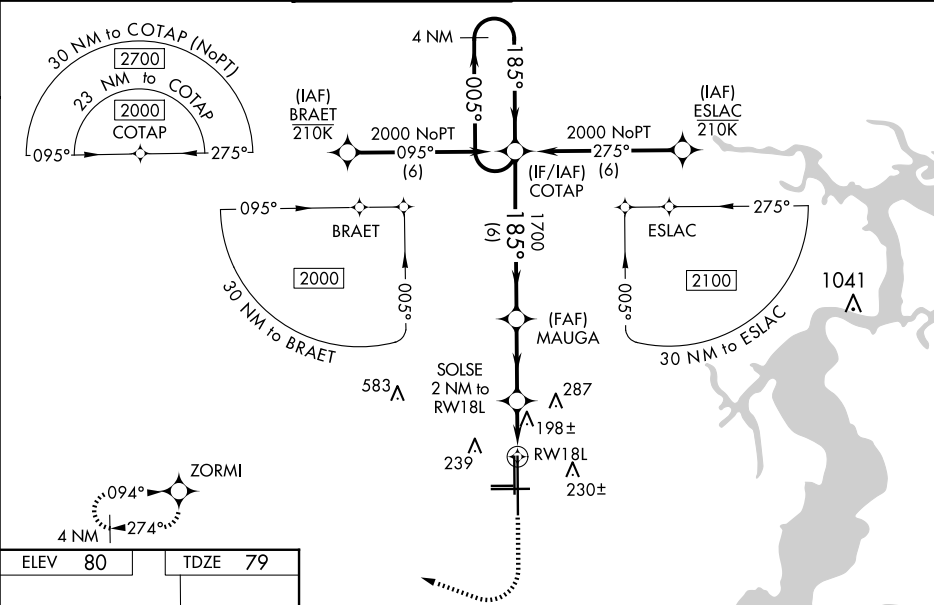
CECIL (VQQ)




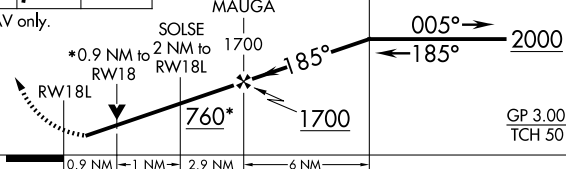

▼ Baro-VNAV NA when using Jacksonville Intl altimeter setting. For uncompensated Baro-VNAV systems, LNAV/VNAV NA below -15°C (5°F) or above 54°C (130°F). DME/DME RNP-0.3 NA.

▲ When local altimeter setting not received, use Jacksonville Intl altimeter setting and increase all DA 52 feet and all MDA 60 feet. For inop MALSR, increase LNAV Cats C/D visibility to 1½ mile. For inop MALSR, when using Jacksonville Intl altimeter setting, increase LNAV/VNAV all Cats visibility to 1½ mile and LNAV Cats C/D visibility to 1½ mile. Inop table does not apply to LPV and LNAV/VNAV all Cats and LNAV Cat A/B visibilities. When using Jacksonville Intl altimeter setting, inop table does not apply to LPV all Cats and LNAV Cat A/B visibilities. VDP NA when using Jacksonville Intl altimeter setting.

MISSED APPROACH: Climb to 1000 then dimbing right turn to 2000 direct ZORMI and hold.

ATIS <b>125.275</b>	JACKSONVILLE APP CON <b>127.775 377.075</b>	CECIL TOWER ★ <b>126.1 (CTAF) 235.625</b>	GND CON <b>121.625 226.675</b>	CLNC DEL <b>123.975 254.25</b>	GCO <b>135.075</b>
------------------------	--	--	-----------------------------------	-----------------------------------	-----------------------



1000	2000	ZORMI	VGSI and RNAV glidepath not coincident (VGSI Angle 3.00/TCH 66).	
			4 NM Holding Pattern	
*LNAV only.				
				
CATEGORY	A	B	C	D
LPV DA		329-1	250 (300-1)	
LNAV/ VNAV	DA	368-1	289 (300-1)	
LNAV MDA		460-1	381 (400-1)	
 CIRCLING	540-1 460 (500-1)	560-1 480 (500-1)	600-1½ 520 (600-1½)	640-2 560 (600-2)