

TACAN FOK
Chan 47
(111.0)

APP CRS
230°

Rwy Idg
TDZE 66
Apt Elev 66

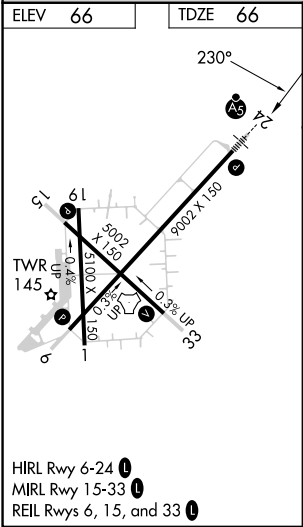
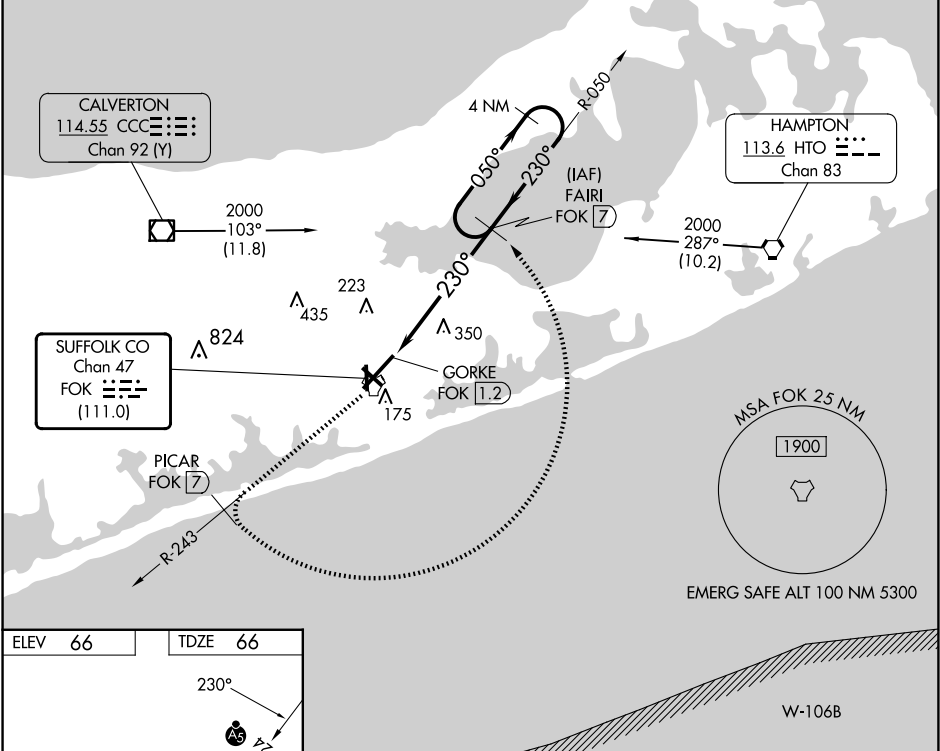
TACAN RWY 24
FRANCIS S GABRESKI (F'OK)

VDP NA with Shirley altimeter setting. When local altimeter setting not received, use Shirley altimeter setting and increase all MDAs 40 feet and S-24 Cat C/D visibility ½ SM and Circling Cat C visibility ¼ SM. Circling Rwy 15 NA at night.

MALSR

MISSED APPROACH: Climb to 2000 on FOK TACAN R-243 to PICAR/7 DME then arc CCW to FAIRI/7 DME and hold.

ASOS 119,925	NEW YORK APP CON 125.975 343.65	SUFFOLK COUNTY TOWER ★ 125.3 (CTAF) 0 236.6	GND CON 121.8 225.4
-----------------	------------------------------------	--	------------------------



2000 ↑ FOK R-243	PICAR FOK 7	Arc CCW	FAIRI FOK 7	VGSI and descent angles not coincident (VGSI Angle 3.00/TCH 77).
FAIRI FOK 7				4 NM Holding Pattern
FOK TACAN GORKE FOK 1.2				
FOK 2.8				
1.6 NM 4.2 NM				
CATEGORY	A	B	C	D
S-24	660-½ 594 (600-½)		660-1¼ 594 (600-1¼)	
CIRCLING	660-1 594 (600-1)		700-1¾ 634 (700-1¾)	740-2¼ 674 (700-2¼)