

|  |                        |   |             |
|--|------------------------|---|-------------|
| WAAS<br>CH <b>40009</b><br><b>W24A</b> | APP CRS<br><b>236°</b> | Rwy Ldg<br>TDZE<br>Apt Elev<br><b>66</b><br><b>66</b> | <b>9002</b> |
|--|------------------------|---|-------------|

RNAV (GPS) RWY 24

FRANCIS S GABRESKI (F'OK)

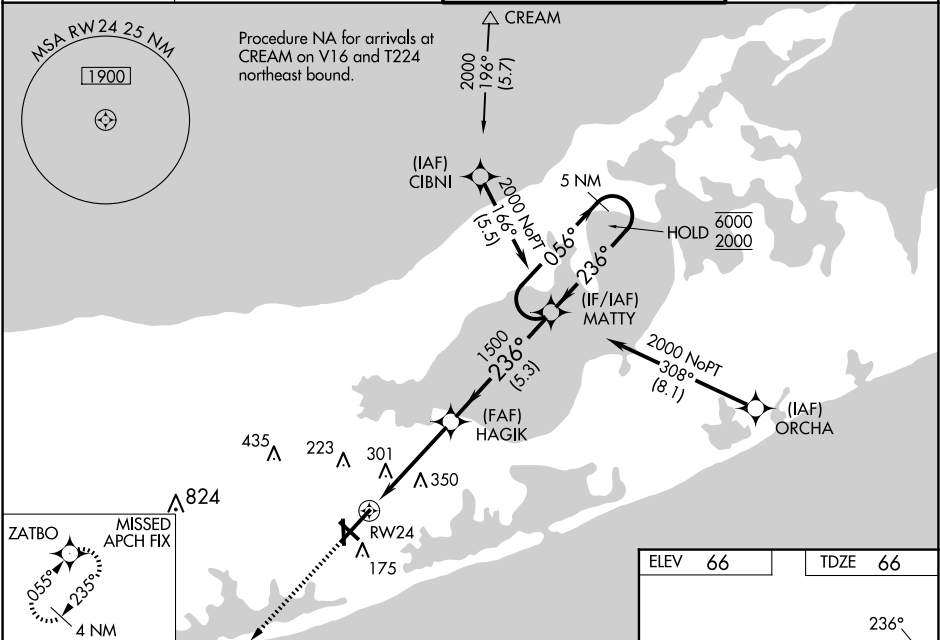
RNP APCH - GPS.

▼ For uncompensated Baro-VNAV systems, LNAV/VNAV NA below -15°C or above 54°C.  
▲ Rwy 24 helicopter visibility reduction below ¾ SM NA. Baro-VNAV and VDP NA when using HWV altimeter setting. Circling Rwy 15, 19 NA at night. When local altimeter setting not received, use HWV altimeter setting and increase LPV DA to 368 feet; increase LNAV/VNAV DA to 590 feet. Increase all MDAs 40 feet; and Circling visibility Cat C/D ¼ SM. For inop ALS, increase LPV all Cats visibility to ¾ SM; LNAV/VNAV visibility all Cats to 1¾ SM; LNAV Cats A/B visibility to 1 SM, Cats C/D visibility to 1¾ SM. For inop ALS when using HWV altimeter setting, increase LPV visibility all Cats to ¾ SM; LNAV Cats A/B visibility to 1 SM.



MISSED APPROACH:  
Climb to 2600 direct  
ZATBO and hold.

|                        |   |  |                               |
|------------------------|---|--|-------------------------------|
| ASOS<br><b>119.925</b> | NEW YORK APP CON<br><b>125.975 343.65</b> | SUFFOLK TOWER ★<br><b>125.3 (CTAF) 0 236.6</b> | GND CON<br><b>121.8 225.4</b> |
|------------------------|---|--|-------------------------------|



|              |                      |  |                      |                        |                 |
|--------------|----------------------|--|----------------------|------------------------|-----------------|
| 2600         | ZATBO                | VGSI and RNAV glidepath not coincident (VGSI Angle 3.00/TCH 77). |                      |                        |                 |
| ↑            | ★                    | 5 NM Holding Pattern   |                      |                        |                 |
| RW24         |                      | 1.3 NM to RW24   | HAGIK 1500           | MATTY 6000 2000        | GP 3.00° TCH 55 |
| 1.3          |                      | 3 NM   | 5.3 NM               |                        |                 |
| CATEGORY     | A                    | B  | C                    | D                      |                 |
| LPV DA       |                      | 338-¾  | 272 (300-¾)          |                        |                 |
| LNAV/VNAV DA |                      | 560-1  | 494 (500-1)          |                        |                 |
| LNAV MDA     | 560-¾                | 494 (500-¾)  | 560-1                | 494 (500-1)            |                 |
| CIRCLING     | 600-1<br>534 (600-1) | 620-1<br>554 (600-1)   | 700-2<br>634 (700-2) | 740-2¼<br>674 (700-2¼) |                 |

