
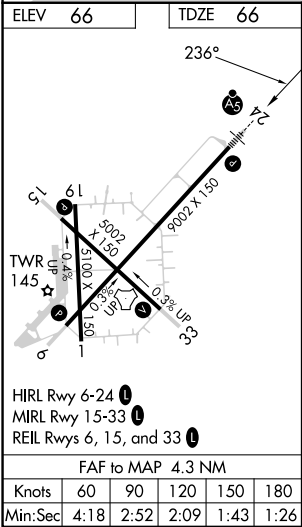
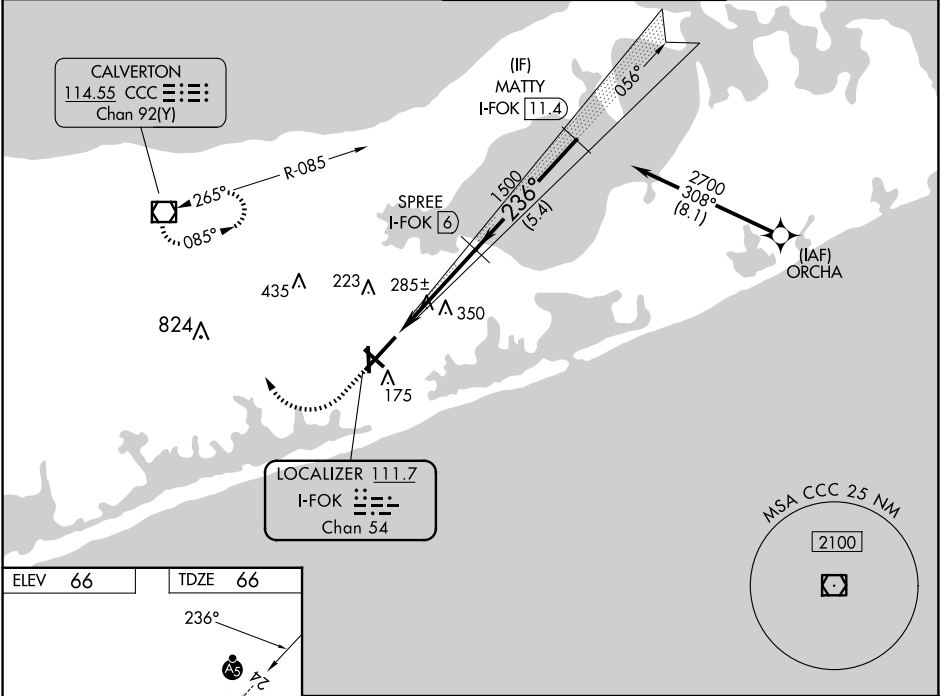


LOC/DME I-FOK	APP CRS	Rwy Ldg	9002
111.7	236°	TDZE	66
Chan 54		Apt Elev	66

ILS or LOC RWY 24

FRANCIS S GABRESKI (F'OK)

RNP APCH - GPS. From ORCHA.		<div>MALSR</div> <div></div>	MISSED APPROACH: Climb to 880 then climbing right turn to 2000 direct CCC VOR/DME and hold.
DME required for LOC only.			
<div><div><div>▼</div><div>▲</div></div><div>Rwy 24 helicopter visibility reduction below ¾ SM NA. Circling Rwy 15, 19 NA at night. VDP NA when using HWV altimeter setting. For inop ALS, increase S-ILS 24 all Cats visibility to ¾ SM and S-LOC 24 Cat A/B visibility to 1 SM and Cat C/D visibility to 1¾ SM. When local altimeter setting not received, use HWV altimeter setting and increase S-ILS 24 DA to 374 feet; increase all MDAs 40 feet and Circling visibility Cat C/D ¼ SM.</div></div>			
ASOS 119.925	NEW YORK APP CON 125.975 343.65	SUFFOLK TOWER★ 125.3 (CTAF) 0 236.6	GND CON 121.8 225.4



ELEV 66	TDZE 66	VGSI and ILS glidepath not coincident (VGSI Angle 3.00/TCH 77).			
880		2000	CCC	MATTY I-FOK 11.4	
1.2 NM		3.1 NM	5.4 NM	2700	
1500		1500	1500	GS 3.00° TCH 60	
CATEGORY		A	B	C	D
S-ILS 24		344-¾		278 (300-¾)	
S-LOC 24		540-¾	474 (500-¾)	540-1	474 (500-1)
CIRCLING		600-1 534 (600-1)	620-1 554 (600-1)	700-1¾ 634 (700-1¾)	740-2¼ 674 (700-2¼)