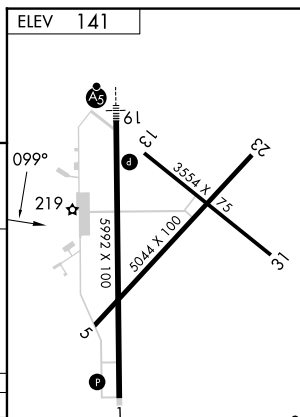
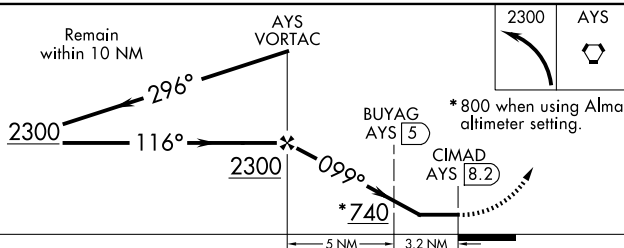
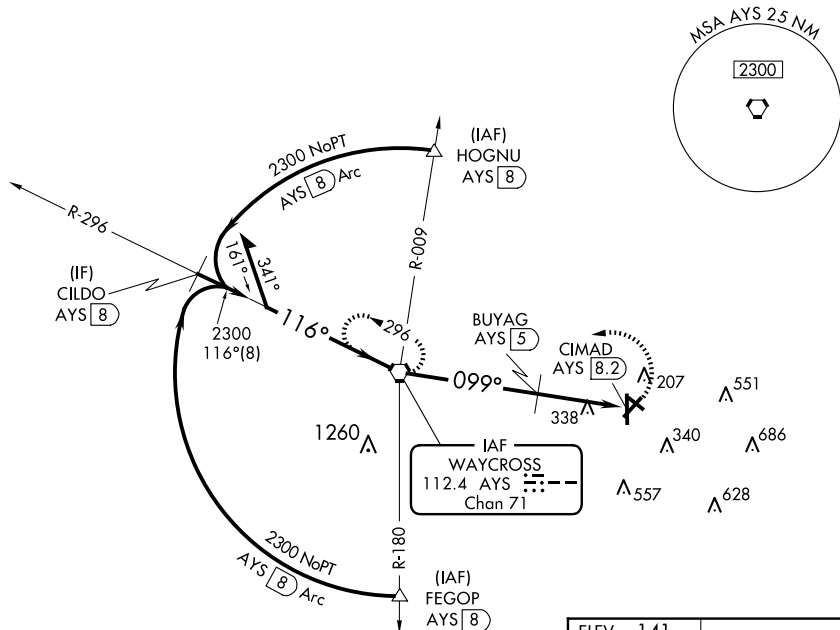


VOR-A
WAYCROSS-WARE COUNTY (AYS)

MISSED APPROACH: Climbing
left turn to 2300 direct AYS
VORTAC and hold.

UNICOM
122.8 (CTAF) **L**

CATEGORY	A	B	C	D
CIRCLING	740-1 579 (600-1)		860-2 719 (800-2)	860-2½ 719 (800-2½)
BUYAG FIX MINIMUMS (DME REQUIRED)				
CIRCLING	680-1 539 (600-1)	720-1 579 (600-1)	860-2 719 (800-2)	860-2½ 719 (800-2½)

HIREL Rwy 1-19					
REIL Rwy 19					
FAF to MAP 8.2 NM					
Knots	60	90	120	150	180
Min:Sec	8:12	5:28	4:06	3:17	2:44

SE-4, 10 JUL 2025 to 07 AUG 2025