

WAAS CH 45509 W19A	APP CRS 184°	Rwy Idg TDZE 140 Apt Elev 141	5992
--	------------------------	---	-------------

RNAV (GPS) RWY 19

WAYCROSS-WARE COUNTY (AYS)

⚠

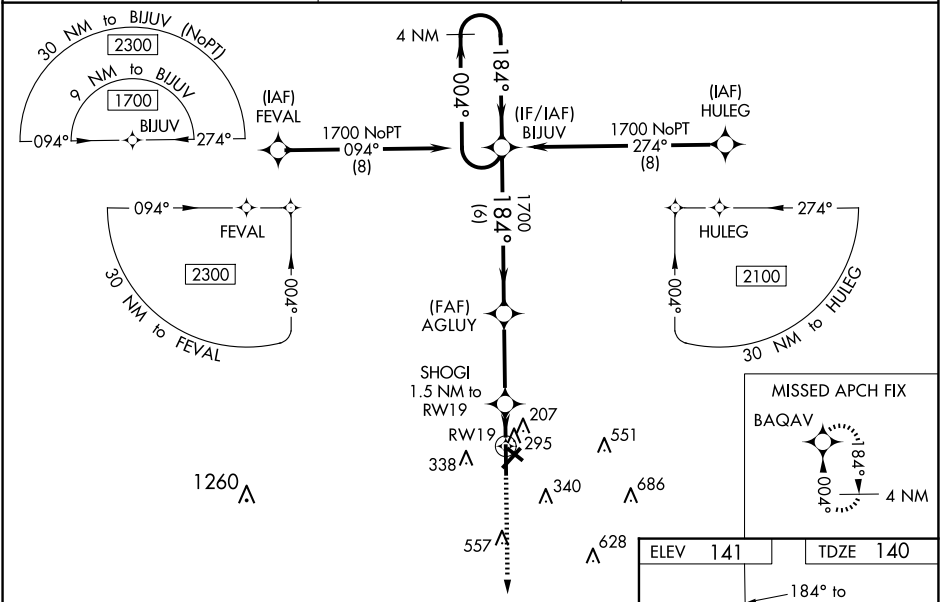
DME/DME RNP-0.3 NA. Baro-VNAV NA when using Alma altimeter setting. When local altimeter setting not received, use Alma altimeter setting: increase LPV DA to 390 feet and LNAV/VNAV DA to 600 feet and all MDA 60 feet; increase LNAV/VNAV visibility all Cats and LNAV Cat C/D visibility ¼ mile; increase Circling Cat C/D visibility ¼ mile. For inop MALSR, increase LNAV Cat C/D visibility to 1½ mile. For inop MALSR when using Alma altimeter setting increase LNAV/VNAV visibility all Cats to 1½ mile, and LNAV Cat C/D visibility to 1¾ mile. For uncompensated Baro-VNAV systems, LNAV/VNAV NA below -15°C (5°F) or above 54°C (130°F). Night landing Rwy 5, 31 NA.

MALSR

MISSED APPROACH:

Climb to 1800 direct BAQAV and hold.

AWOS-3 118.575	JACKSONVILLE CENTER 127.575 269.025	UNICOM 122.8 (CTAF) 0
--------------------------	---	---------------------------------



4 NM Holding Pattern		VGSI and RNAV glidepath not coincident (VGSI Angle 3.00/TCH 45).		1800	BAQAV
1700 ← 004°		1700 → 184°		SHOGI 1.5 NM to RW19	*RNAV only.
GP 3.00° TCH 51		*660		RW19	
6 NM		3.2 NM		1.5 NM	
CATEGORY	A	B	C	D	
LPV DA		340-1½	200 (200-½)		
LNAV/VNAV DA		550-7⁄8	410 (500-7⁄8)		
LNAV MDA	560-1½	420 (500-½)	560-3⁄4	420 (500-¾)	
CIRCLING	660-1 519 (600-1)	720-1 579 (600-1)	860-2 719 (800-2)	860-2¼ 719 (800-2¼)	

