

LOC I-AYS	APP CRS	Rwy Ldg	5992
108.3	184°	TDZE	140
		Apt Elev	141

ILS Z or LOC Z RWY 19

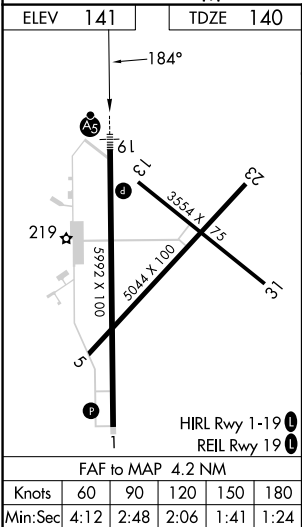
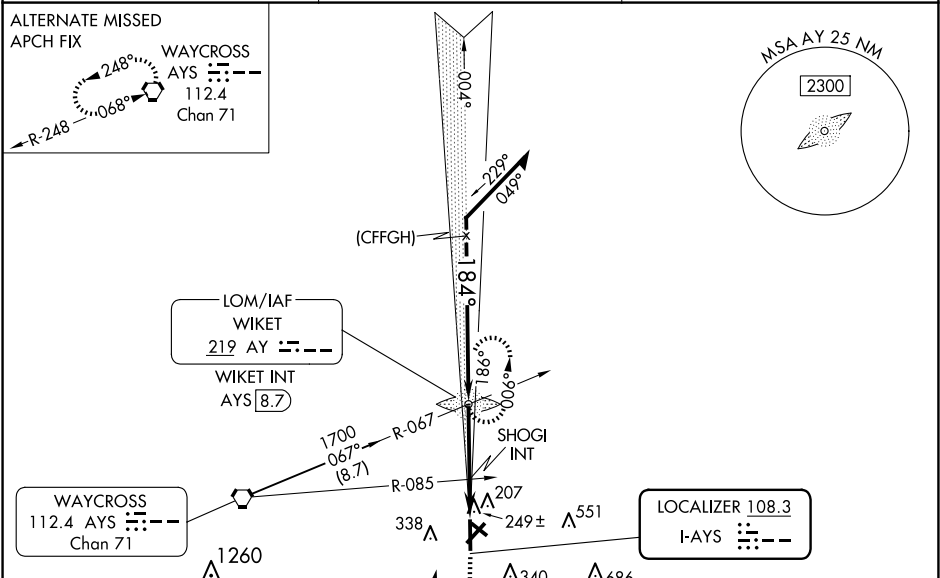
WAYCROSS-WARE COUNTY (AYS)

ADF Required. When local altimeter setting not received, use Alma altimeter setting: increase DA to 390 feet and all MDA 60 feet; increase S-LOC 19 Cat C/D visibility ½ mile; increase Circling Cat C/D visibility ¼ mile. For inop MALSR, increase S-LOC 19 Cat C/D visibility to 1 mile. For inop MALSR when using Alma altimeter setting, increase S-LOC 19 Cat C/D visibility to 1½ mile. Increase SHOGI Fix Minimums S-LOC 19 Cat C/D visibility to 1½ mile. Night Landing Rwy 5, 31 NA.

MALSR

MISSED APPROACH: Climb to 800 then climbing right turn to 1700 direct WIKET LOM and hold.

AWOS-3 118.575	JACKSONVILLE CENTER 127.575 269.025	UNICOM 122.8 (CTAF) 0
-------------------	--	--------------------------



CATEGORY	A	B	C	D
S-ILS 19	340-½		200 (200-½)	
S-LOC 19	600-½	460 (500-½)	600-¾	460 (500-¾)
CIRCLING	660-1	720-1	860-2	860-2¼
	519 (600-1)	579 (600-1)	719 (800-2)	719 (800-2¼)
SHOGI FIX MINIMUMS (DUAL VOR RECEIVERS REQUIRED)				
S-LOC 19	500-½	360 (400-½)	500-¾	360 (400-¾)
CIRCLING	660-1	720-1	860-2	860-2¼
	519 (600-1)	579 (600-1)	719 (800-2)	719 (800-2¼)