

| | | |
|----------------------------------|------------------------|---|
| LOC I-AYS <u>108.3</u> | APP CRS 184° | Rwy Ldg 5992 TDZE 140 Apt Elev 141 |
|----------------------------------|------------------------|---|

ILS Y or LOC Y RWY 19
WAYCROSS-WARE COUNTY (AYS)

T GPS required. When local altimeter setting not received, use Alma altimeter setting: increase DA to 390 feet and all MDA 60 feet; increase S-LOC 19 Cat C/D visibility $\frac{1}{8}$ mile; increase Circling Cat C/D visibility $\frac{1}{4}$ mile. For inop MALSR when using Alma altimeter setting, increase S-LOC 19 Cat C/D visibility to $\frac{1}{8}$ mile. Night landing Rwy 5, 31 NA.

MALSR



MISSED APPROACH:
Climb to 1800 direct
BAQAV and hold.

| | | |
|--------------------------|---|---------------------------------|
| AWOS-3 118.575 | JACKSONVILLE CENTER 127.575 269.025 | UNICOM 122.8 (CTAF) 0 |
|--------------------------|---|---------------------------------|

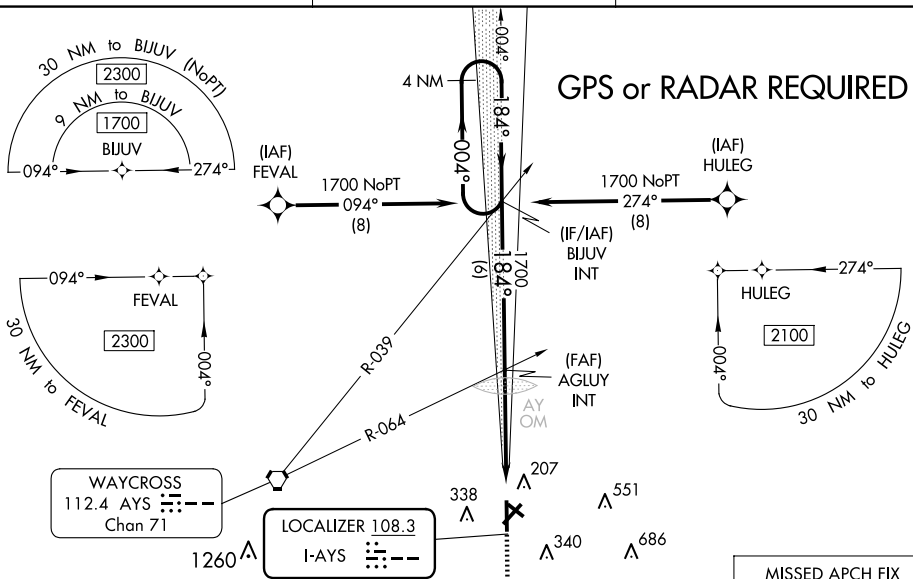
[illegible]

Diagram illustrating a non-parallel VGS and ILS glidepath. The VGS (Visual Glide Slope) is at 3.00 degrees, and the ILS glidepath is at 4.5 degrees. The VGS and ILS glidepaths are not coincident, with a difference of 1.5 degrees. The VGS angle is 3.00 degrees, and the ILS angle is 4.5 degrees. The VGS angle is 3.00 degrees, and the ILS angle is 4.5 degrees. The VGS angle is 3.00 degrees, and the ILS angle is 4.5 degrees.