

WAAS CH <b>86305</b> <b>W22A</b>	APP CRS <b>224°</b>	Rwy Idg TDZE Apt Elev	<b>5200</b> <b>83</b> <b>83</b>
--	------------------------	-----------------------------	---------------------------------------

RNAV (GPS) RWY 22

HANCOCK COUNTY/BAR HARBOR (BHB)

RNP APCH - GPS.

▼

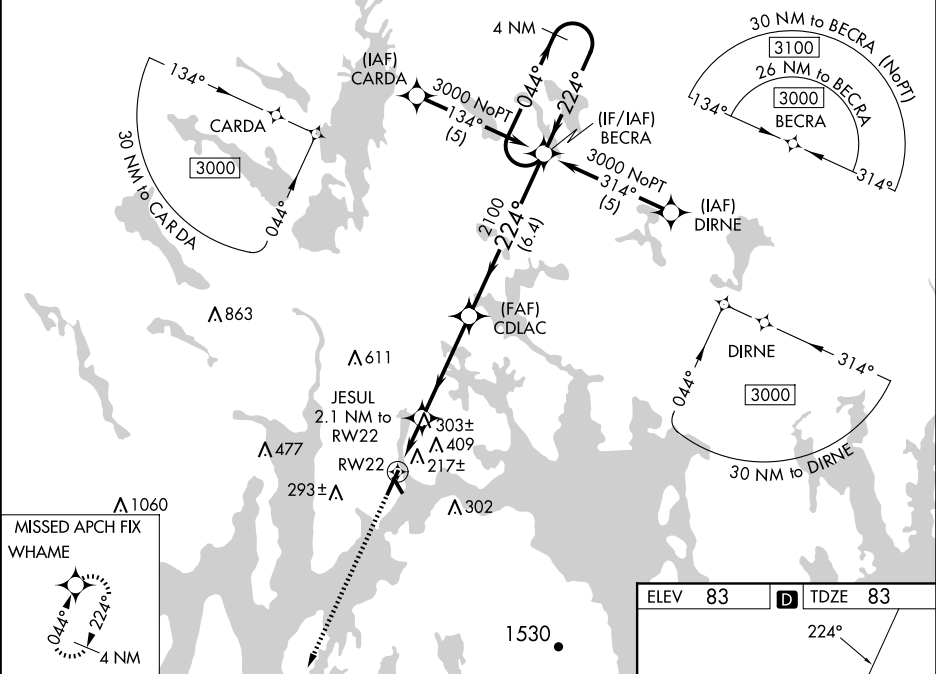
Baro-VNAV NA when using Bangor altimeter setting. When local altimeter setting not received, use Bangor altimeter setting and increase LPV DA to 366 feet; increase LNAV/VNAV DA to 780 feet and all visibilities ¼ SM. Increase all MDAs 100 feet and LNAV visibility Cats C/D, and Circling visibility Cats C/D ¼ SM. When using Bangor altimeter setting, inop table does not apply to LNAV/VNAV all Cats and LNAV Cat C. For uncompensated Baro-VNAV systems, LNAV/VNAV NA below -15°C or above 49°C. Circling Rwy 17, 35 NA at night.

MALSF

MISSED APPROACH:

Climb to 2900 direct WHAME and hold.

AWOS-3PT <b>118.35</b>	BANGOR APP CON <b>133.6 284.65</b>	CLNC DEL <b>119.9</b>	UNICOM <b>123.0</b> (CTAF)	<b>122.70</b>
---------------------------	---------------------------------------	--------------------------	-------------------------------	---------------



2900

WHAME

\*LNAV only.

JESUL 2.1 NM to RW22

CDLAC

BECRA

4 NM Holding Pattern

\*1.4 NM to RW22

2100

224°

044°

3000

GP 3.00°

TCH 51

VGSi and RNAV glidepath not coincident (VGSi Angle 3.00/TCH 55).

1.4 NM

0.7

4 NM

6.4 NM

CATEGORY	A	B	C	D
LPV DA		283-¾	200 (200-¾)	
LNAV/VNAV DA		697-1½	614 (700-1½)	
LNAV MDA	580-¾	497 (500-¾)	580-1¼	580-1½
			497 (500-1¼)	497 (500-1½)
CIRCLING	600-1	720-1	720-1¾	840-2½
	517 (600-1)	637 (700-1)	637 (700-1¾)	757 (800-2½)

