

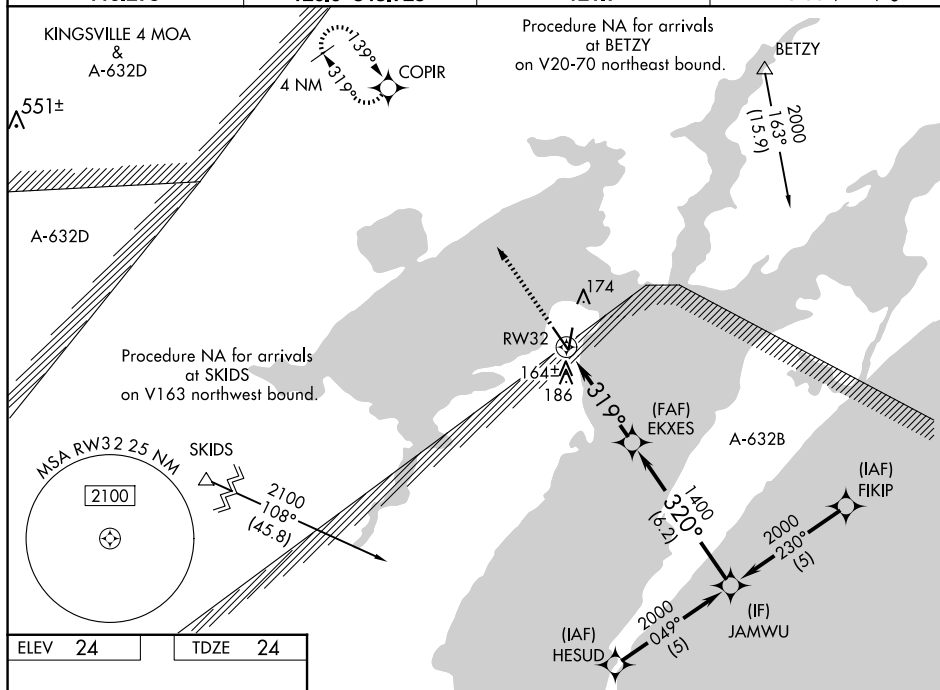
WAAS CH 45917 W32A	APP CRS 319°	Rwy Idg 5608 TDZE 24 Apt Elev 24
--	------------------------	---

RNAV (GPS) RWY 32
ARANSAS COUNTY (RKP)

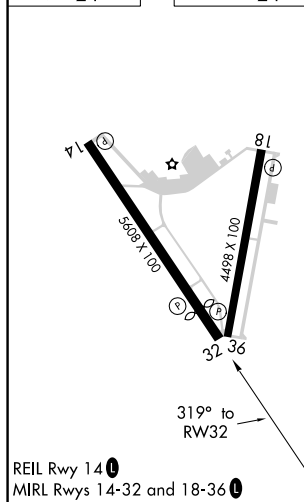
T Baro-VNAV NA when using Ingleside altimeter setting. For uncompensated Baro-VNAV systems, LNAV/VNAV NA below -15°C (5°F) or above 54°C (130°F). DME/DME RNP-0.3 NA. Helicopter visibility reduction below ¾ SM NA. When local altimeter setting not received, use Ingleside altimeter setting and increase all DA 33 feet and all MDA 40 feet, increase LNAV Cat C visibility ¼ mile. VDP NA with Ingleside altimeter setting.

MISSED APPROACH:
Climb to 2000 direct
COPIR and hold.

ASOS	CORPUS APP CON	CLNC DEL	UNICOM
119.275	120.9 348.725	121.7	123.05 (CTAF) L



ELEV	24		TDZE	24
------	----	--	------	----



VGS1 and RNAV glidepath not coincident.
(VGS1 Angle 3.00°/TCH 25)

Procedure Turn NA

* LNAV only

RW32

EKKES

JAMWU

2000

1400

319°

320°

1.2 NM

3 NM

6.2 NM

GP 3.00°
TCH 40°