

WAAS
CH **53617**
W14A

APP CRS
139°

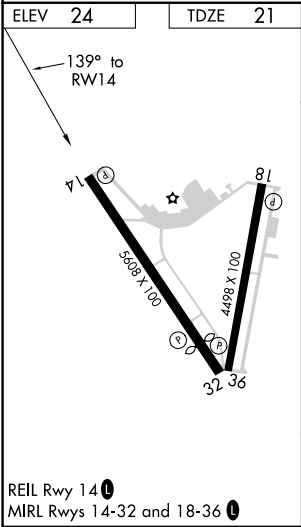
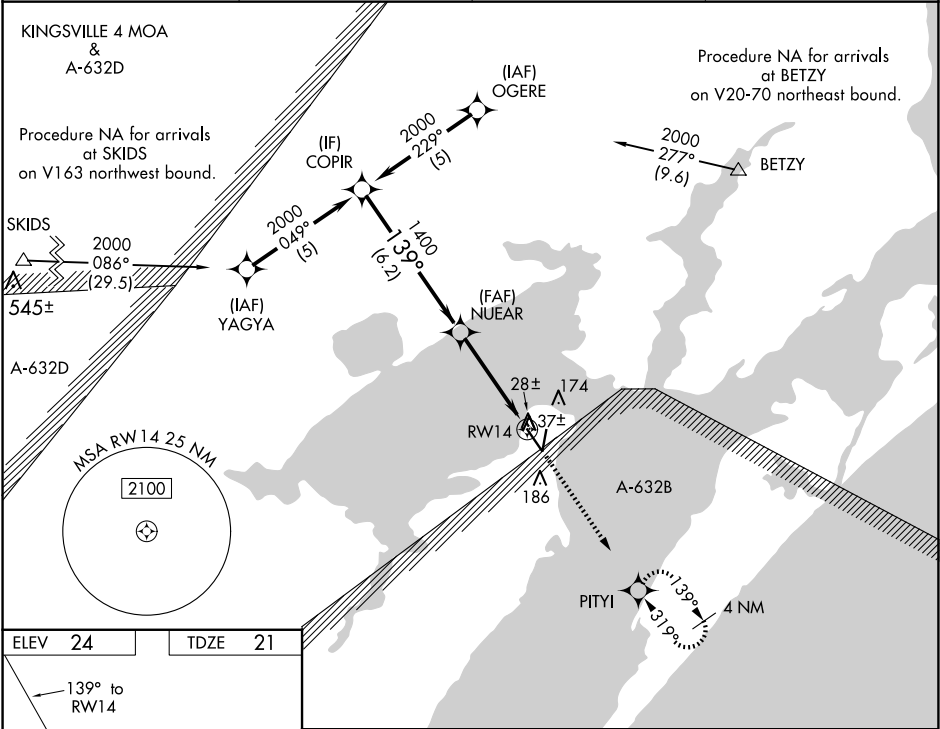
Rwy Idg **5608**
TDZE **21**
Apt Elev **24**

RNAV (GPS) RWY 14
ARANSAS COUNTY (RKP)

Baro-VNAV NA when using Ingleside altimeter setting. For uncompensated Baro-VNAV systems, LNAV/VNAV NA below -15°C (5°F) or above 54°C (130°F). DME/DME RNP-0.3 NA. Helicopter visibility reduction below ¾ SM NA. When local altimeter setting not received, use Ingleside altimeter setting and increase all DA 33 feet and all MDA 40 feet increase LNAV/VNAV all Cats visibility ¼ mile. VDP NA with Ingleside altimeter setting.

MISSED APPROACH: Climb to 2000 direct PITYI and hold.

ASOS 119.275	CORPUS APP CON 120.9 348.725	CLNC DEL 121.7	UNICOM 123.05 (CTAF) 0
------------------------	--	--------------------------	----------------------------------



Procedure Turn NA COPIR		* LNAV only	2000	PITYI
2000		139°	NUEAR	
GP 3.00° TCH 35		1400		
		6.2 NM	3.3 NM	0.9 NM
		* 0.9 NM to RWY 14		
		RWY 14		
CATEGORY	A	B	C	D
LPV DA	271-1		250 (300-1)	NA
LNAV/VNAV DA	378-1¼		357 (400-1¼)	NA
LNAV MDA	320-1		299 (300-1)	NA
CIRCLING	500-1		476 (500-1)	500-1½ 476 (500-1½)