

WAAS CH 53443 W29A	APP CRS 290°	Rwy Idg TDZE Apt Elev	5600 212 212
--	------------------------	-----------------------------	---

RNAV (GPS) RWY 29

SAN LUIS OBISPO COUNTY RGNL (SBP)

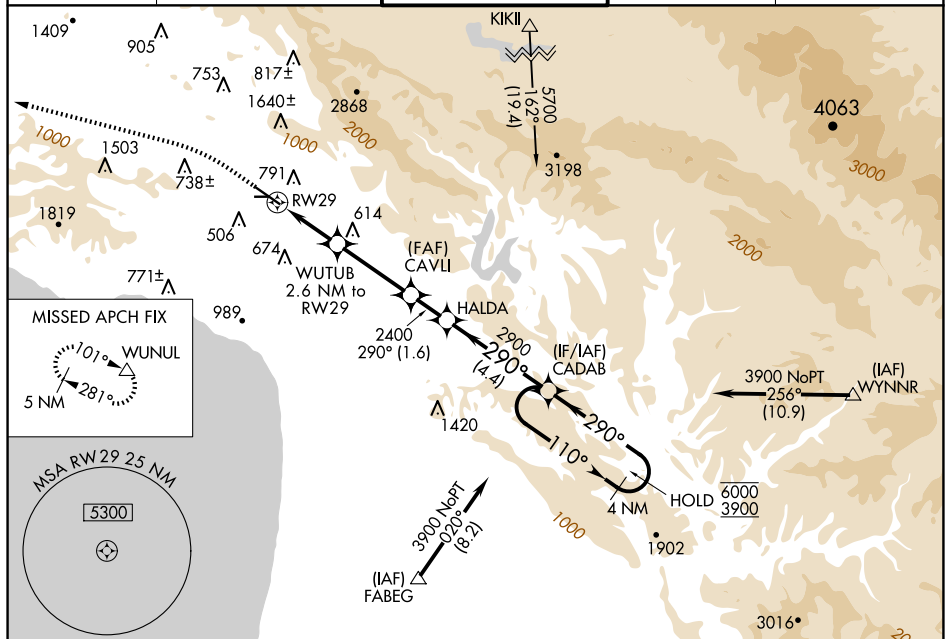
SAN LUIS OBISPO COUNTY RGNL (SRP)

RNP APCH.

- T** Circling to Rwy 25 NA at night. Circling NA north of Rwy 11-29.
A Rwy 29 helicopter visibility reduction below $\frac{3}{4}$ SM NA. For uncompensated Baro-VNAV systems. LNAV/VNAV NA below 0° C or above 52° C.

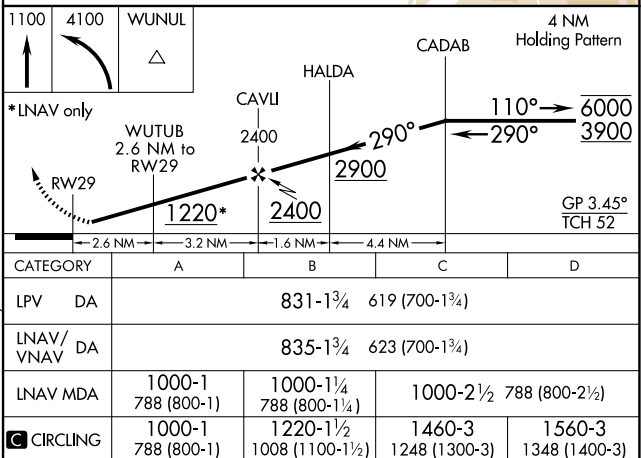
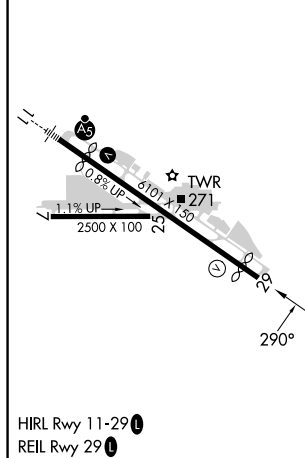
MISSED APPROACH: Climb to 1100 then climbing left turn to 4100 direct WUNUL and hold, continue climb-in-hold to 4100.

ATIS 120.6	SANTA BARBARA APP CON★ 127.725 244.575	SAN LUIS TOWER★ 124.0 (CTAF) 379.9	GND CON 121.6	UNICOM 122.95
---------------	---	---------------------------------------	------------------	------------------



ELEV 212	D	TDZE 212
----------	----------	----------

Procedure NA for arrivals
at FABEG on V27, T261
southeast bound.



CATEGORY	A	B	C	D
LPV DA	831-1 ³ / ₄ 619 (700-1 ³ / ₄)			
RNAV/ VNAV DA	835-1 ³ / ₄ 623 (700-1 ³ / ₄)			
RNAV MDA	1000-1 788 (800-1)	1000-1 ¹ / ₄ 788 (800-1 ¹ / ₄)	1000-2 ¹ / ₂ 788 (800-2 ¹ / ₂)	
CIRCLING	1000-1 788 (800-1)	1220-1 ¹ / ₂ 1008 (1100-1 ¹ / ₂)	1460-3 1248 (1300-3)	1560-3 1348 (1400-3)