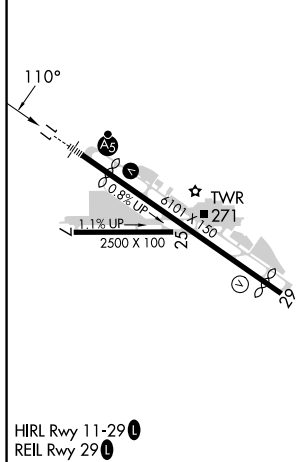
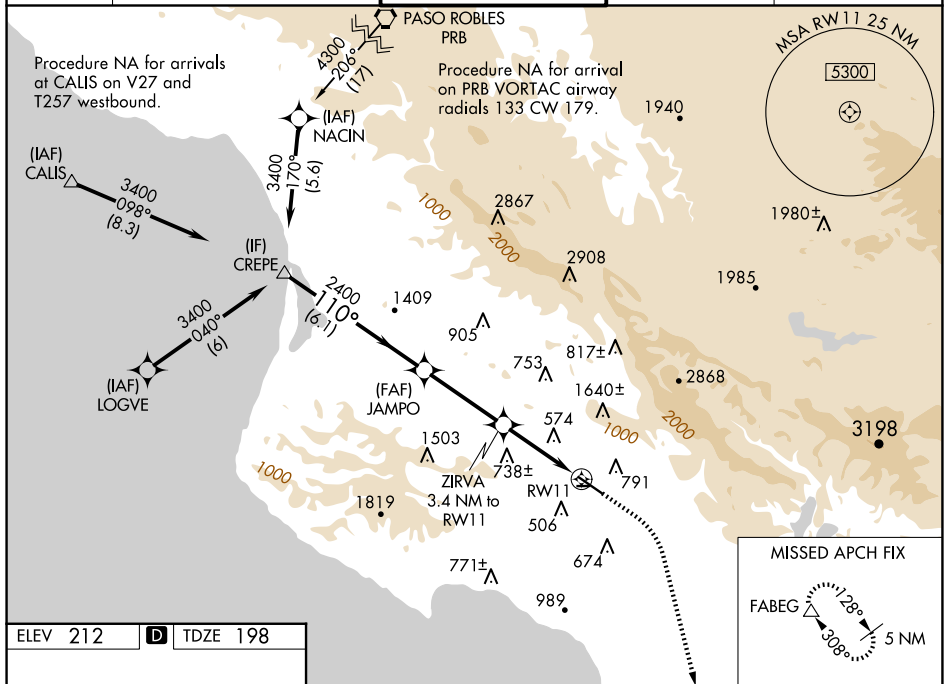


WAAS CH 50328 W11A	APP CRS 110°	Rwy Idg 5300 TDZE 198 Apt Elev 212
--	------------------------	---

RNAV (GPS) RWY 11
SAN LUIS OBISPO COUNTY RGNL (SBP)

RNP APCH.		<div>MALSR</div> <div><div><div>A</div><div>5</div></div></div>	MISSED APPROACH: Climb to 1000 then climbing right turn to 4800 direct FABEG and hold, continue climb-in-hold to 4800.	
<div><div>V</div><div>A</div></div> <div>Circling NA north of Rwy 11-29. Circling Rwy 25 NA at night. For uncompensated Baro-VNAV systems, LNAV/VNAV NA below 0°C or above 54°C. For inop ALS, increase LNAV/VNAV all Cats visibility to 2 SM.</div>				
ATIS 120.6	SANTA BARBARA APP CON★ 127.725 244.575	SAN LUIS TOWER★ 124.0 (CTAF) 0 379.9		GND CON 121.6
		UNICOM 122.95		



CATEGORY	A	B	C	D
LPV DA	398-½	200 (200-½)		
LNAV/VNAV DA	946-1¾	748 (800-1¾)		
LNAV MDA	840-½	642 (700-½)	840-1⅜	642 (700-1⅜)
C CIRCLING	840-1 628 (700-1)	1220-1½ 1008 (1100-1½)	1460-3 1248 (1300-3)	1560-3 1348 (1400-3)