

LOC I-SBP
109.7

APP CRS
110°

Rwy ldg **5300**
TDZE **198**
Apt Elev **212**

ILS or LOC RWY 11

SAN LUIS OBISPO COUNTY RGNL (SBP)

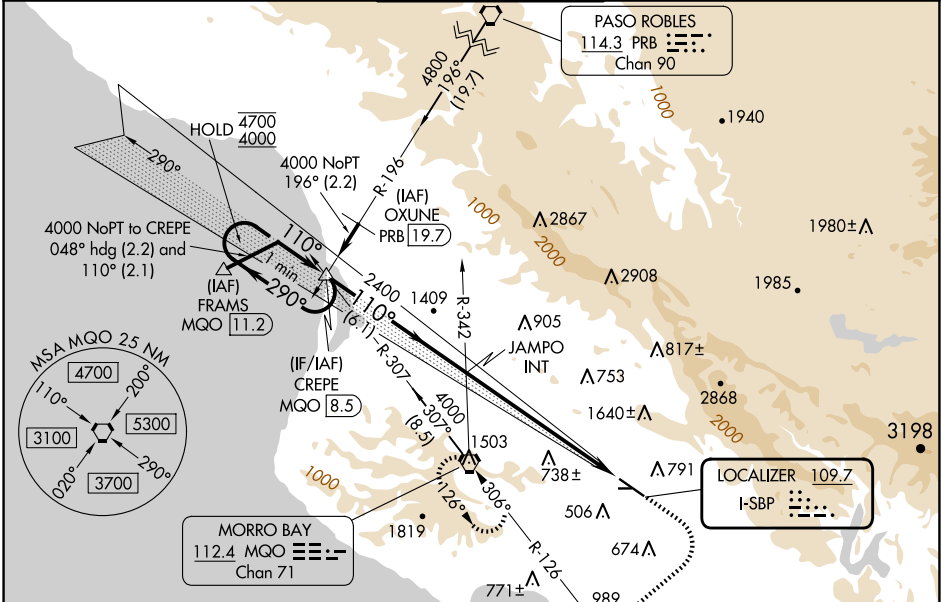
⚠

Circling Rwy 25 NA at night. Circling NA north of Rwy 11-29. Autopilot coupled approach NA below 677'. For inop ALS, increase S-ILS 11 all Cats visibility to ¾ SM, S-LOC 11 Cat A visibility to 1 ¼ SM, Cat B visibility to 1 ½ SM.

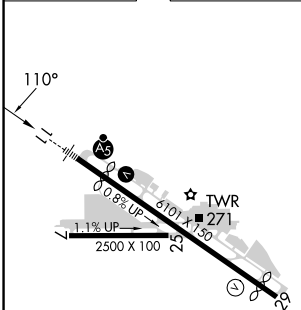
MALSR

MISSED APPROACH: Climb to 1000 then climbing right turn to 3300 on heading 215° and MQO VORTAC R-126 to MQO VORTAC and hold, continue climb-in-hold to 3300. S-ILS 11* missed approach requires minimum climb of 210 feet per NM to 1160.

ATIS 120.6	SANTA BARBARA APP CON* 127.725 244.575	SAN LUIS TOWER* 124.0 (CTAF) 0 379.9	GND CON 121.6	UNICOM 122.95
----------------------	--	--	-------------------------	-------------------------



ELEV 212	D	TDZE 198
----------	----------	----------



REIL Rwy 29

HIRL Rwy 11-29

FAC to MAP 6.9 NM

Knots	60	90	120	150	180
Min:Sec	6:54	4:36	3:27	2:46	2:18

CATEGORY	CREPE MQO [8.5]				1000 3300		MQO
	One Minute Holding Pattern				↑		
	4700 ← 290° 4000 → 110°				MQO R-126		
	GS 3.00° TCH 49				hdg 215°		
	JAMPO INT 2400				6.1 NM 6.9 NM		
S-ILS 11*	398-½ 200 (200-½)						
S-ILS 11	495-½ 297 (300-½)						
S-LOC 11	1420-¾ 1222 (1300-¾)	1420-1 1222 (1300-1)	1420-3	1222 (1300-3)			
CIRCLING	1420-1¼ 1208 (1300-1¼)	1420-1½ 1208 (1300-1½)	1500-3	1760-3			