

WAAS CH <b>61219</b> <b>W01A</b>	APP CRS <b>016°</b>	Rwy Ldg <b>10302</b> TDZE <b>1314</b> Apt Elev <b>1333</b>
--	------------------------	--

RNAV (GPS) Y RWY 1L

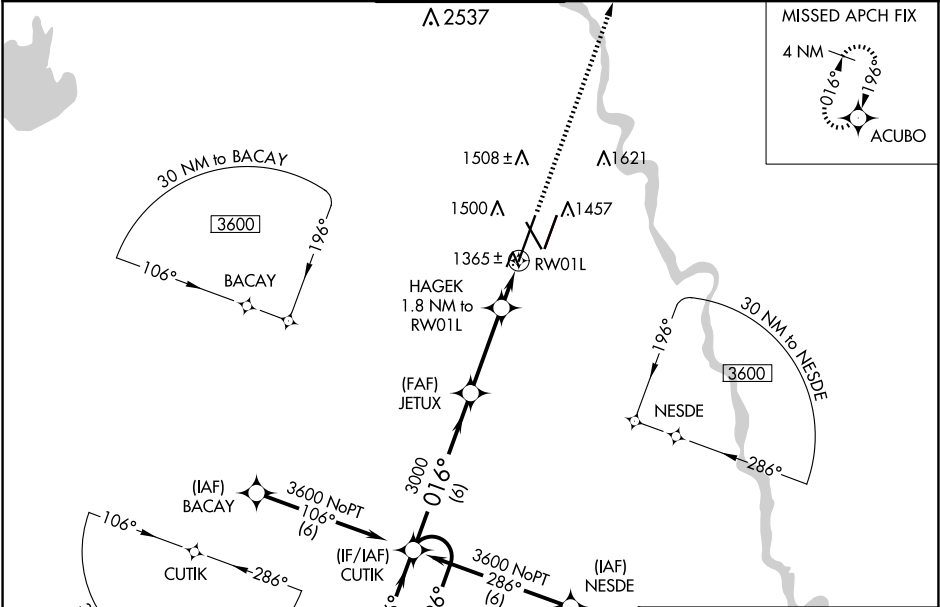
WICHITA DWIGHT D EISENHOWER NTL (ICT)

**⚠** Inoperative table does not apply to LNAV Cat D. For uncompensated Baro-VNAV systems, LNAV/VNAV NA below -15°C (5°F) or above 54°C (130°F). For inoperative ALSF-2, increase LNAV Cat C/D visibility to RVR 4500. DME/DME RNP-0.3 NA. Simultaneous approach authorized with ILS or LOC RWY 1R. LNAV procedure NA during simultaneous operations. Use of FD or AP providing RNAV track guidance required during simultaneous operations.

ALSF-2

MISSED APPROACH:  
Climb to 3600 direct ACUBO and hold.

ATIS <b>125.15</b>	WICHITA APP CON <b>126.7 353.5</b>	WICHITA TOWER <b>118.2 257.8</b>	GND CON <b>121.9 348.6</b>	CLNC DEL <b>125.7</b>
-----------------------	---------------------------------------	-------------------------------------	-------------------------------	--------------------------



ELEV 1333	<b>D</b>	TDZE 1314
-----------	----------	-----------

HIRL all Rwys  
REIL Rwys 14 and 32  
TDZ/CL Rwy 1L

CUTIK					JETUX		HAGEK 1.8 NM to RW01L		ACUBO	
4 NM Holding Pattern					3000		3000		3600	
3600 ← 196°					016° →		016°		*LNAV only.	
GP 3.00°					TCH 52		*1920		RW01L	
					6 NM		3.3 NM		1 NM	
									0.8 NM	
CATEGORY	A		B		C		D			
LPV DA			1514/18		200 (200-½)					
LNAV/VNAV DA			1615/24		301 (300-½)					
LNAV MDA			1620/24		306 (300-½)					
CIRCLING	1800-1		467 (500-1)		1980-1¾		647 (700-1¾)		1980-2	
									647 (700-2)	

